

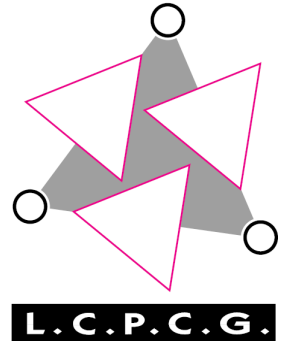
Public Document Pack

LEWISHAM COMMUNITY POLICE CONSULTATIVE GROUP

Working for a safer Lewisham for all

Date: Tuesday, 26 June 2012 at 7.00 pm

Venue: Rooms 1 and 2, Civic Suite,
Lewisham Town Hall, Catford,
London SE6 4RU



AGENDA

Registration will open at 6.30. Tea and Coffee will be available inside the meeting room. The meeting is anticipated to finish no later than 9.30pm.

This is a public meeting and it is open to all.

LCPCG member organisations are called to attend this meeting

The Civic Suite has disabled access. Reports can be made available in additional formats on request and can usually be provided within 3 days. There is also a reading machine at Catford Library. A portable induction loop is also available on request.

Please contact the LCPCG Co-ordinator on (020) 8314 8975 if you have any special requirements regarding communication or access.

PLEASE BRING A COPY OF THESE PAPERS WITH YOU

For any additional information about the meeting please contact:

Daisy Cairns, LCPCG Co-ordinator
2nd Floor, Civic Suite, Lewisham Town Hall
Catford, London, SE6 4RU
Tel: (020) 8314 8975
Email: cpcg@lewisham.gov.uk
www.lewisham.gov.uk/LCPCG

ORDER OF BUSINESS – PART 1 AGENDA

Item No		Page No.s
1.	<p>Welcome and Introduction from Chair of the LCPCG Jackie Addison, chair of Lewisham Community Police Consultative Group will welcome guests to the meeting and introduce the speakers.</p> <p>At various points in the meeting the audience will have the opportunity to question the speakers. The LCPCG do not feel it appropriate to discuss individual cases at our public meetings. The Police have therefore agreed to provide personal responses or written answers to any questions relating to a particular Stop and Search incident that are handed in during the meeting. There will be forms provided at the meeting, to request either a personal contact from the police or a written response. The LCPCG will also publish all the written responses on their website, including any which are anonymous.</p>	
2.	Apologies for absence	
3.	<p>Minutes of previous meeting Draft Minutes of previous meeting are attached.</p>	1 - 12
4.	<p>Lewisham Police Borough Commander - Jeremy Burton Jeremy Burton will give the group an update on policing in the borough.</p> <p><i>Slides uploaded after the meeting.</i></p>	13 - 21
5.	<p>Inspector Simon Rotherham Insp Rotherham is from the central MPS team coordinating STOPIT, and will present STOPIT and give a London-wide perspective.</p>	
6.	<p>Gordon Glean Gordon was the chair of Lewisham's Stop and Search Scrutiny group for a decade and is still a key member of the group. This presentation was recently made to the Borough Commanders of all 32 Metropolitan Boroughs who met to discuss Stop and Search and community engagement.</p> <p><i>Slides uploaded after the meeting</i></p>	22 - 30
7.	<p>Know Your Rights - Short Film This short film was produced by students at Lewisham College to help young people understand their rights in relation to Stop and Search. It was the winning entry in our recent short film competition.</p>	
8.	<p>Chief Inspector Shaun Willshire C I Willshire works in the Partnership unit for Lewisham Police. His presentation will describe Lewisham perspectives on Stop & Search and how local police are implementing the STOPIT process.</p>	

9. Aaron Sonson
Aaron and two friends have developed an innovative mobile phone 'app' which gives people information on their rights around Stop and Search, and also allows them to upload and share their experiences while they are happening. The app is currently available on Android and Blackberry phones - their website is www.stopandsearch.org.

10. Emmanuel Imuere
Emmanuel is the new chair of Lewisham's Stop and Search Scrutiny Group. He will introduce himself and his vice-chair, Sadiki Harris, and explain what the group is planning for the future.

11. Any Other Business

12. Background information

- Each month the police produce information about how many Stop and Searches have happened. It also covers Arrest Rates, Reasons for Stops and Arrests, Ethnicity and more. The latest version is attached here. Data for other boroughs and an MPS wide version are available online at:
http://www.met.police.uk/foi/units/stop_and_search.htm
- The app for Blackberry phones can be downloaded from:
<http://appworld.blackberry.com/webstore/content/94088/>
- More information on the Stop and Search app can be found via:
<http://appsforgood.org/2011/05/09/stop-search-app-the-story-so-far/>
<http://www.guardian.co.uk/law/2012/jun/15/stop-search-app-rights-police>
- Information about citizens' rights in relation to S&S, a brief explanation of the MPS "refreshed" approach to S&S, policies, guidance for officers and citizens are available online - here is a selection of useful links:
<http://www.met.police.uk/stopandsearch/>
<http://www.homeoffice.gov.uk/police/powers/stop-and-search/>
http://www.adviceguide.org.uk/england/undefined/england/law_e/law_legal_system_e/law_police_e/police_powers
- A copy of the notice for this meeting, which can be displayed as an A4 poster is also included in the online document pack.

Information which will be available in hard copy at the meeting:

Stop and Search Know Your Rights cards (pocket sized)

Minutes of last meeting (7 Feb 2012)

Order of Business (reports will not be provided in hard copy)

LCPCG Annual Report 2011-12

Membership List and Membership application forms

LCPCG Constitution and Terms of Reference

31 - 45

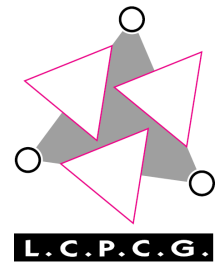
Information on the IPCC and the police complaints process

Safer Neighbourhood Team Contact Details (local police)

Neighbourhood Community Safety Service Contact Details (council)

LEWISHAM COMMUNITY POLICE CONSULTATIVE GROUP

Tuesday 7 February 2012 - from 7.00 pm
Rooms 1 and 2, Civic Suite, Catford, London SE6 4RU



MINUTES

Members present

Chair - Jackie Addison	LBL Councillor
Gurbakhsh Garcha	Ackroyd Community Association
Jenni Steele	Bellingham Ward Panel
Richard Holland	Downham Ward Panel
(Deputy - G Hutt)	Ladywell Ward Panel
(deputy - Amina Mangera)	Lewisham Anti-Racist Action Group
Joanne Hall	Lewisham Central Ward Panel
(deputy - J Bradbury)	Lewisham College
James Dobson	Lewisham Humanist Group
Gordon Glean	Lewisham Shopping Centre
Harry Powell	Lewisham Sports Consortium
David Michael	Marsha Phoenix Memorial Trust
Ch Supt Jeremy Burton	Met Police Borough Commander
Michael Taylor	MOPC BIE Officer
Royston Johnston	NCBI London
Phil Turner	Second Wave Youth Arts
Mahad Abdullahi	Somali and Somaliland London Community
Tayo Disu	The Tabernacle
Florence Emakpose	World Of Hope

Non members present

Jo Delaforce	The Haven	Elsa Pascal	LEMP
Gary Connors	LBL Crime Reduction	Judith Dore	Second Wave Youth Arts
D Catino	MPS	Hena Choudhury	"
T Wilkinson	MPS	Aminata Bah	"
Daisy Cairns	LCPCG Coordinator	Macey McMullen	"
Bryan Pope	Tyrwhitt Road N Watch	Ami Considine	"
Karin O Sullivan	Lewisham Healthcare NHS	Sacha Ray	Victim Support
K A Joseph Dublin	Lewisham Healthcare NHS	Barry Tucker	Hyde Housing
Teresa Ross	Lewisham Healthcare NHS	Carol Faithful	Community Safety
Siva Pillai	LEMP	Karen Duggan	Safe Neighbour
David Laurie	MPS	Kellie Williams	LBL Crime Reduction
Chioma Dijeh	MPS	Ade Solarin	LBL Crime Reduction
Jon Kelsey	LBL early intervention	H D Levy	Resident
Angela Mullen	LBL community safety	B T Langridge	Resident
Alfene Charles	LBL community safety	Sadiki Harris	Resident
Denis Savin	LBL	Alex Gaspard	LARAG
Anthony Scully	Friends of Home Park	Ian Anderson	LARAG
Thomas Joseph	Step by step	Richard Abendhof	LARAG
Alvan Wright	Youth service	J Rae	-unknown-
Wonu Adelaja	World of Hope		

1. Apologies

LCPCG members: Geeta Subramaniam - Head of Crime Reduction Services at LB Lewisham, Christine Kibblewhite - Crofton Park SNP, Martyn Grover - LBBAC, Joanne Bish and Mike Lewis- Lewisham Council Black Staff Forum, Nico Springman - Ladywell SNP, Heidi Alexander MP, Joan Ruddock MP, Graham Gaskell - Goldsmiths Union, Lee King - Lewisham Fire Service, Anh-Tu Nguyen - FORVIL Co-ordinator, Cllr Eva Stamirowski - L B Lewisham, Lakshmi Samarawickreme Ass. Of Sri Lankans in the UK, Laurel Saunders - Rushey Green SNP.

Others: Jane Duffy, Miriam Long - Lewisham LINK

2. Chair's Welcome

Jackie Addison welcomed everybody to the meeting. She passed on the news that Geeta Subramaniam is now on maternity leave after giving birth to a daughter and offered congratulations on behalf of the LCPCG. Gary Connors is attending in her place.

The Chair gave the group updates on a number of items. Metropolitan Police Authority has recently been abolished and the Mayor of London is now responsible for the scrutiny of the Metropolitan Police Service. Kit Malthouse has been appointed as Deputy Mayor for Policing and Crime and he will run the Mayors Office for Policing and Crime (MOPC) who will provide LCPCG's funding now. This will probably make policing a more political issue in London but we have yet to see quite what difference it will make. We have had feedback from other CPEGs who attended the recent MOPC Roadshow in Croydon that they were troubled that views were being gathered only after key plans and decisions had already been made, that none of the questions which had been submitted were answered, and that the Deputy Mayor left at the mid-way interval. Michael Taylor is the officer at MOPC who provides liaison with Lewisham and he was introduced to the meeting.

The LCPCG's AGM is the next meeting on 27 March. Nomination papers have been distributed to members. A list of members is available on the side table for information, please contact Daisy if you have any questions.

The LCPCG is also holding a workshop event on 1st March. For a number of years we have held meetings where people can contribute to the Safer Lewisham Partnership's Strategic Assessment. This year they are running an online survey for people to contribute and our meeting will be focus on finding solutions to the issues raised in the survey.

3. Minutes and Matters Arising from previous meeting

The minutes of the previous meeting were agreed as a true record.

Jo Hall asked when the minutes of the August 2011 meeting would be presented. Jackie

LCPCG

Royston John asked if there was an update on the point about the New Cross Fire - mentioned on page 5. The Borough Commander didn't have an update but offered to get back to Royston directly about the matter

J Burton

4. Guest Speaker: Jo Delaforce Haven - support centre for rape and sexual assault victims.

Jo Delaforce explained that she is a specialist nurse practitioner in forensics at The Haven in Camberwell, which is the specialist referral unit for victims of rape and sexual assault for 12 boroughs - the whole of South London. The Haven was the first partnership of its type between the National Health Service (NHS) and the Metropolitan Police (MP) and it

delivers a gold standard service to victims of Sexual Assault. Kings College Hospital were asked to set up a specialist service as it was found that the victim suites used in police stations were often not fit for purpose, often cold, isolated and not at all suitable places for victims of trauma.

The centre opened as a pilot scheme in 2001 - originally intended to be for adults only, but on the first night a 14 year old victim arrived at A&E and the Haven agreed to help as there were no alternative facilities to send her to. In 2004 the pilot was completed and 2 other centres were opened in other parts of London. The Haven in Camberwell is based within Sexual Health Services. Referrals have increased by over 40% since opening, not only from police but anyone else: A&E, third parties and clients' self-referrals. The team give 24 hour cover, doctors, crisis workers, other health professionals and client advocates. Most of the nurses have an A&E or Sexual Health background. All Haven staff are specially trained to care, advise and treat survivors of Sexual Assault and to gather Forensic evidence for potential prosecution. Across the country there are now 39 similar specialist centres.

There is a myth that only "stranger rape" is true rape, where someone is dragged into the bushes, but this is far from true, most cases of rape are in fact domestic. An average of 167 women are sexually assaulted every day. 1 in 5 will go on to report the assault. 1 in 10 men experience sexual assault, but men tend not to report. 1 in 4 women experience some form of sexual assault in their lifetime.

The services offered by the Haven start with first aid - this will take priority before any tests are discussed, although intimate injuries are rarer than the public perceive, <1%. Victims are then offered a range of forensic tests, clean new clothes, washing facilities, emergency contraception, infection prevention and treatment (for sexually transmitted infections including HIV, Hep B). Clients are also offered psychosocial care for the long term repercussions of the assault.

For self referrals (i.e. not through the Police) the Haven offer anonymous forensic testing so clients can decide at a later stage whether they want to give details to the police. But, if tests find a DNA match to series of other crimes then they may be passed onto police as it is critical to the public interest to catch serial offenders. An alternative is to have samples taken and frozen so if the victim feels ready they can be tested later, they also offer just the counselling and advice.

Jo explained that The Havens also offer a unique opportunity for clients to have a conversation with the police without having to report the case. This will help by giving a true idea of what is likely to happen. TV and press often give a very unrealistic representation of court cases. This is special because normally a police officer would *have to* formally report the case if it was discussed with them. And it really does work. Over 60% of clients go on to report to the police which speaks volumes.

What we can't do - the service can't confirm if victims were drugged, as the tests don't work once the effects fade. They can't fill in the gaps or confirm if it was sexual assault/rape or sexual intercourse that took place. They also can't provide housing or shelter, but they and the police do have relationships with a range of other services where clients can be referred to.

CONTACT DETAILS 020 3 299 1599 www.thehavens.co.uk/camberwell.php

5. 5 i) Guest Speaker: Acting Detective Inspector Domenica Catino SCD2 / Sapphire (MPS police rape investigations unit)

A/DI Catino has been a police officer for 12 years and is working in Walworth station,

although she was at Lewisham until recently. She has 6 years of experience dealing with violence against women.

SCD2 is the new name for what used to be known as Operation Sapphire. SCD2 was set up in 2009 to provide a consistently high level of service for rape victims across London, that cases are identified and offences recorded in the same way in each borough. This also means that suspects who are involved in a series of cases can be identified more effectively even if when cases are spread geographically. There is a rigorous selection programme to join the unit, then a 1 week training course, but if officers don't work out they will be sent back to make sure that all are suitable.

Thousands of reports of rape are made to the Metropolitan Police every year from men and women of all ages. All reports are treated with the same professional response. Despite a modern world there are still many myths which exist today regarding the word RAPE. Most reported rapes are domestic rapes. The majority of rapes are reported by the victim or a friend of the victim. 999 calls will go to a call handler whom will give specific advice to a victim and despatch a police officer to the victim. Police now receive a large number of reports from a third party for example social worker or other party.

The first response after a 999 call will be uniformed officers. The priority is to use first aid and to make the victim safe, and then contain the crime scene. After this they will bring the victim to the police station, a private area called a Comfort Suite and take an initial account. Within an hour a specialist SOIT officer will be assigned who is trained to provide care, support and information in a sensitive and compassionate manner. They do also receive reports via third parties, schools, social care, friends and family, but once a report has been made police are duty bound to meet with the victim. We do them meet with them but are sensitive to the circumstances and there is no pressure to report the incident. Of course the Police do have to think about forensic testing though as this will help the case if they do prosecute.

Forensic testing. Victims will be advised not to wash, go to the toilet, eat or drink until they have attended the Haven. It is understood that this can be extremely distressing therefore police will complete an Early Evidence Kit (EEK) with a victim. An EEK consists of: 1) Urine Sample, 2) Mouth Swab, 3) Mouth Rinse. Specialist SOIT officers will support a victim from the start to the end of an investigation. . SOIT - Sexual Offence Investigative Techniques trained officer - there is a 6 week training programme. They are crucial to the investigation and maintaining the relationship with the victim. They are careful to explain each test and process and SOIT officers are very conscious of what a traumatic situation this is for the victim and are very much led by the wishes of the victim. They can explain police procedure and instil confidence in the victim to attend the Haven and support an investigation. They will also gather evidence and information from the victim in a manner which contributes to the investigation and refer victim to support agencies

Suspect - once a suspect is arrested we will seize the clothing that the suspect was wearing at the time of the offence, nail clippings, mobile phones, laptops. They do need a suspect's permission to take intimate samples such as penile swabs or pubic hair.

Even if the victim doesn't want to deal with the details of the case, the police will ensure that the suspect is fully investigated, to check if they are wanted for any other offences, and the police will take any other steps which could help.

The victim themselves is also technically a crime scene. So Police will take her to the Haven for full testing. This includes taking clothing and swabs from anywhere that the suspect has touched, not just intimate areas. There was a case in Beckenham were

female joggers were being molested, and the type of contact left DNA and the offender is now on the Sex Offenders register. Forensic examination of the crime scenes will take place by specially trained officers. These crimes can take place anywhere, homes, parks, streets, roads, all types of places, and as with the testing of the victim, there are time limits of when the tests can be done effectively.

5 ii) Guest Speaker: Detective Inspector Tim Wilkinson SCD2 / Sapphire

DI Wilkinson introduced himself - he leads the team of officers who investigate serious sexual offences in Lewisham. His aim tonight is to answer questions, and to reassure audience that anyone who reports a sexual offence will be taken seriously, from the very first contact. According to the British Crime Survey only 12% of sexual offences are reported. 92 % of the victims his team see report that they do feel taken seriously.

This is an important aim - in order to make sure that victims and offenders are dealt with properly it all starts with a victim having enough confidence to come forward and report an incident. Under the Sexual Offences Act 2003 there are 13 different categories of sexual offence. Between Sept 2009 and now there has been an increase of around 30-35% of all types of sexual assault. DI Wilkinson sees that as an increase in the proportion of victims who are willing to report the cases, and an improvement in consistency across boroughs in London.

Alison Saunders, Chief prosecutors for the CPS in London gave a speech recently and highlighted some interesting statistics about the challenges which people who report sexual assaults are facing. In a month snapshot 87% of rape victims were vulnerable through at least one of these areas: through drink or drugs, being under 18, having a mental health issue, or being or having been in an intimate relationship with the suspect. These aren't excuses, but think about those individuals, ask yourself if you were that person would you want to share details of your over use of drink or drugs, if you were young, naïve and vulnerable as you don't have the experience of life, or if you were terrified of what the perpetrator would do to you or your family. Think how this would make you feel about standing up in front of 12 men and women good and true. It is a fundamentally different area of business. This has a bearing on prosecution rates.

DCI Wilkinson also mentioned a few points which had come up in the earlier presentations. Only in 15% of cases are the offender unknown to the victim, and even fewer have never even met the offender in passing. Stranger rape really is very uncommon.

If you look at the bare facts then in a certain period only around 30 cases ultimately come to successful prosecution in Lewisham, out of about 240 reported offences. As well as all the reasons why the victim may not wish to take the case forward, the CPS have to have a pragmatic view. Public interest will be taken into account, but if a witness' credibility has been severely compromised then CPS have to consider if it is a good use of public funds to take the prosecution through.

Linked series of Sexual assaults. In the 12 months we have identified 104 series of linked assaults across the capital. This is a success of the intelligence led approach and has roughly doubled, and is a very positive area.

Drug facilitated offences. This is a significant problem for police to investigate. What this often means in practice is that a victim wakes up after a traumatic and dramatic incident with hazy or limited memory of what has happened – it is difficult if they don't know what happened for them to work up the confidence to report it to anyone, let alone report a rape to the police. Also there is only a short window where stimulants can be detected after being used, whether deliberately or unknowingly.

Alison Chambers speech can be viewed at goo.gl/PveUD and the Met Police webpage for information on the SCD2 teams is <http://www.met.police.uk/sapphire>

Questions for Jo, Domenica and Tim.

The Chair took questions from the floor and asked speakers to identify themselves for the minutes.

Karen O’Sullivan – As a worker in sexual health services in Lewisham, I’d urge anyone who might need help, or is at all unsure to visit us for advice and support, we work closely with the Havens and can refer survivors on (with consent) on or help in other ways. Young women often hide the clothes they were wearing, e.g. in a carrier bag at the bottom of the wardrobe. This type of evidence can be critical. Also after drug facilitated rapes, young people may not be sure if they have been assaulted. Please if you do know anyone who is concerned send them to one of the Sexual health services where we can help and support them.

Thomas Joseph, Step by Step counselling – If we had been talking about similarly serious questions of drugs and alcohol, we would have heard about some education program, are there any targeting this subject on young children and men? **Chair** – That is a very good question and one that Gary will be discussing later in the meeting so if you don’t mind we will move on to the next question.

Cllr Crada Onegbu had a question about the satisfaction levels for rape investigation in Lewisham. **DI Wilkinson** was able to clarify that the 92% was actually a good figure and apologised for not being clearer. He noted that the police have grasped the need to engage with people and to make sure that people can be confident that their reports will be taken seriously.

Royston John, NCBI- Thank for the presentation but there was some horrendous information. 6% success rate is terrible the scenario is where a women reporting rape is effectively putting herself on trial, she can’t have any slip in her image, this is an appalling situation to be in in 2012. Also gangs carrying out rape seems to be becoming more prevalent, what can we do as a society? **A/DI Catino** – there does need to be education, in schools - politicians need to make this part of the curriculum happen. She speaks in schools and finds that there is a lot of misunderstandings. Boys don’t understand that oral sex can be rape and there is a lot of peer pressure. Its about giving the confidence and the information to the girls to say they don’t have to put up with that. I’ve spoken to girls who have been raped by gangs who tell us it has been set up by their friends. Education is key, but the consequences do need to be strong and I don’t feel they are at the moment. **Jo Delaforce** - The Haven has a specialist youth worker and Jo often accompanies her into schools and speaking to young people. Some schools are open, but other schools aren’t, and insist that none of their children get in trouble, drink alcohol, have sex or are raped. She also noted that even though this is 2012, there is still an issue with public perception, the Havens ran a survey and the majority of respondents were women and the majority thought that most women asked to be raped – the way the dress or act, going back to his place, etc. The barriers are there so unless we get into schools attitudes won’t really change. **DI Wilkinson** – one of the biggest barriers to prosecution is jury attitudes and preconceptions, particularly when the victim and perpetrator are know to one another, or when the victim has been drinking alcohol. As a society we need to be aware that juries bring these attitudes to court and they affect outcomes and ultimately lives. **Chair** – Indeed there has been a media campaign recently – particularly that judges are allowed to warn juries about being influenced by preconceptions, but only during the summing up, which is after the damage is already done. The campaign is to allow judges to say this at the beginning of the trial when it would make a serious difference.

The Chair then introduced the next speaker Gary Connors who was about to describe some of the work the local authority is doing to educate young men and women who are vulnerable in terms of gangs and sex.

6. Gary Connors - Lewisham Council Crime Reduction Service Manager

6 i) The Heart Programme

In 2009 there was a conference in London about serious youth violence – one of the issues which came up was that young people have issues with relationships, they don't understand what behaviours are appropriate or not. The police then applied for and got European funding for criminal justice projects, working in partnership with a programme in Lithuania. They needed local authorities to work as partners and Lewisham, Newham and Waltham Forest boroughs volunteered to be involved in this pilot. The Lithuanian side of the project is looking closely at the trafficking of young women and in London the focus is to support vulnerable young men and women and improve the relationships they have with both peers and boy/ girl friends. HEART stands for "Healthy Relationships Training" and the programme will run for two years, starting from mid 2011. There are four strands - to produce the maximum impact in diverting young people from becoming victims of crime, or committing crime themselves.

The first two strands are available to all young people in London, not just the 3 pilot areas - they are aimed at 11-16 year olds

1. Helpline: 0800 1111 A 24/7 Free phone helpline number that young people can phone for advice about any issue that might be concerning them. The helpline is being delivered by Childline and it is anonymous and confidential.

2. Website: www.heartprogramme.org. Online advice for young people and parents

The other two strands are only being run in the 3 boroughs and are aimed at 11-14 year olds. Both tenders were won by the same company, Foundation for Life.

3. Workshop packages on healthy relationships: In Lewisham 120 young people will be put through targeted provision (i.e. based on their identification as vulnerable), and 120 through a "universal" provision. The targeted package is a 12 week course being delivered to cohorts of 10 young people, in single sex groups. So far in Lewisham we have been working with John Evelyn school and have put two cohorts of 10 young men and a cohorts of 10 young women. There have be challenges as we have developed the course, and Lewisham have had the most input of any of the boroughs in shaping the direction. The course provides young people with a model of what healthy relationships look like. It also covers issues of consent in sexual relationships, impulse control, emotional development, negotiation skills, and respect for self and others. Another school and several youth groups are lined up to run the 9 week universal package shortly.

4. Mentoring provision: Provision of one-to-one mentoring by youth workers for 60 young people in Lewisham, some of these have come through the targeted workshops. Young people are being referred to the targeted course and the mentoring from a range of other partners, including police, Youth Offending, schools, and social services. A number of young people who regularly go missing are at risk in this area.

Questions for Gary and further questions for Jo, Domenica and Tim.

The Chair took questions from the floor and asked speakers to identify themselves for the minutes.

Ami from 2nd Wave - You said that only 1 in 5 women report when they have been raped. Do you know if there are figures which relate to young women? **DCI Wilkinson** - I don't have the figures to hand but I am sure there will be lots of data available through the Home Office website, you might want to look up the name Steven Kavanagh.
<http://www.homeoffice.gov.uk/crime/violence-against-women-girls/sexual-violence/>

David Michael - Marsha Phoenix Memorial Trust. What is your relationship like with the child protection services, and what about male on male sexual assault and rape? DCI Wilkinson - We work with the child protection services on a case by case basis. In terms of male rape there is considerable underreporting. All the barriers to a woman reporting an assault, plus the relationship or the person's sexuality may not be publicly known which may give further concern. Several times we have had specialist help from "GALUP" which is a specialist Gay and Lesbian police organisation providing support nationally - sorry but I can't remember the details of the acronym.

Sadiki Harris - 316 Media - Question for Gary - The HEART programme sounds very good, but I was concerned that there was no mention of the parents of the 11-14 year olds. Gary Connors - sorry I should have mentioned that - parents will receive letters explaining about the workshops if their kids are involved, and there will be other information sent home throughout the course. In the mentoring side, the mentor will always meet with the family and be able to speak to them - our mentors are very tuned into working with parents and dealing with any disclosure which may come about. They parents will be very much involved.

Anthony Scully- Friends of Home Park - the Heart Programme does sound quite good - I have 2 Questions - At the end of the pilot who do you report to? And secondly is it possible to incorporate that into the PSHE in schools? **Gary** - at the end of the programme we only have to report to our European funders, but as council officers we will also report to the Safer Lewisham Partnership, which includes the Mayor and the Borough Commander to pass on what the benefits have been for Lewisham. We would like to include elements in the PSHE curriculum, and certainly one of the reasons that Lewisham officers have been closely involved in developing the training is so that we can plan an exit strategy, but those discussions haven't begun yet.

The chair then thanked Jo, Domenica and Tim very much for coming and for their interesting presentations, she noted that you could tell they were very good by the depth of the questions they provoked.

7. Jeremy Burton - *Lewisham Police Borough Commander*

Mr Burton noted that he was going to speak about the headline performance figures in the borough and give a short powerpoint presentation. He explained that this was a work in progress, and that he wanted to provide a clear and consistent set of data at these meetings, and was continuing to work with the Strategy Group to evolve this. He would also be discussing, policing of the Olympics, Total Victim Care, the recent Stop and Search developments, and Sydenham Police Station.

Mr Burton referred to the slides for Serious youth violence, Knife Crime and Personal Robbery. These three areas are interlinked and are of concern to the police - every effort is being made to reduce them. Mr Burton mentioned a positive figures of some sort for each area, which varied by area, and included percentage increases or number of offences increased - both compared to "last year", or in the case of Personal robbery, over the last three months - he also noted that 33 Personal Robberies were generated by the August Disorder in 2011. Residential Burglary was reported to be a positive position compared to last year, as was Theft of Motor Vehicles, Theft from Motor Vehicles was noted to be below last year but climbing and so was an area being monitored. Overall there was some good news and some challenges still, and Lewisham Police are working incredibly hard to try and reduce those, but it is about sharing responsibility, and we are doing that with the community, with our partners, with . Overall crime is 6% down, which is 1500 offences and this has been falling for the previous 2 years. Anti Social Behaviour

is down 17 % compared with this time last year. *(The slides were not provided to the public so any figures spoken by Mr Burton, which were solely comparative, will not stand alone out of context. Therefore they are not recorded here.)*

It is roughly 120 days until the Olympics begin - a 16 day period. It will be a significant drain on London's policing. The Opening Ceremony will require 9 thousand officers, 2,000 are coming from outside forces. The Notting Hill Carnival uses about 5 or 6 thousand officers. This will be a significant drain, so we are looking at changing shift patterns, restricting annual leave, and maintaining minimum strengths in certain areas. We are mindful of the challenges it will present for local policing, and equally of the strain it will put on my staff

Total Victim Care - there was a big launch internally within the police yesterday. The Commissioner has a Total policing ethos. We have reviewed the way we update victims of crime, and improved our IT systems to help us manage this. There are areas in Lewisham where we need to improve this, not least burglary. I've found through my own sampling that we make false promises and ultimately we let people down. We are doing a host of work internally, but the best feedback I can get is from you. If you feel you have been let down, then get in touch with me, drop me a line, an email, give me a ring. We do a random survey on victims of crime to see how they feel but if there are particular bad news or even particularly good news - please feed that back to me.

Stop and Search - I know that Gordon will be talking about this shortly. We have a new deputy commissioner - who is the ACPO lead on Stop and Search. This is a good thing as he and the Commissioner have provided a renewed focus. There was a briefing on Thursday last week for all Borough Commanders, and in the afternoon for all borough's lead officers and also a member of the community for each borough. Phil from Second Wave attended, and Gordon was guest of honour and gave presentations.

Sydenham Police Station. There have been rumours circulating that it is going to close. I've put out a press statement and also have visited Sydenham station to speak to staff about why this is the case. The MPS have to save 22% of our budget over the next 3 years. The balance has to be made between getting rid of staff and officers, and getting rid of logistics, infrastructure and buildings. There are 800 buildings in the MPS which are actually owned by MOPC, not the MPS. The Estates Management team are running a long term ongoing programme looking a large number of buildings which could be sold across the capital but there is no specific plan to close Sydenham Station. It is one of the buildings across the capital which they are considering the future of - and this also includes Brockley Station. I have spoken them yesterday, in preparation for this meeting and they confirmed that there are no specific plans for the closure of Sydenham station.. They are carrying out what is effectively a feasibility study.

Questions for Mr Burton

The Chair took questions from the floor.

James Mitchell - Sydenham Ward Panel. We are very happy with the Sydenham SNT and are very concerned about the distance that they would have to travel from the next nearest base at Catford. We are looking for reassurance from you that you are feeding into the process about what a negative impact this would have on our very effective teams. Mr Burton - Thank you for the positive comments. I have put my concerns to them, about the community, and the question of where those three safer neighbourhood teams would be based if the building was closed and the serious impact it would have on their work - as you know transport would be an issue, as cars and even bicycles are also being reduced. I don't think my opinion will count for much, but community voices can have an impact so I urge you to make your feelings known.

Unknown gentleman - I live in Downham and we are undergoing a steep rise in house burglary - what is going to happen during the Olympics, how are you going to maintain an adequate level of staff? **Mr Burton** - the minimum number of officers will be one sergeant and one constable on each ward, but we are able to put in a bid for additional cover due to particular issues. In other wards in the borough we have been very successfully tackling burglary, arresting a burglar nearly every day. As you know - there isn't a one to one match - but arresting a burglar prevents many offences.

Antony Scully - like James earlier I am on Sydenham ward panel, and also on Bellingham ward panel. Recently Bernard Hogan Howe visited Lewisham and he talked about the great importance of neighbourhood policing. It is very important to keep the local presence, could you take the example of Penge Station from Bromley and sell the building to raise funds but build a smaller, modern building on the site for the team to work from. Mr Burton - Also recently the NPIA came to Lewisham and in their report they said our Safer Neighbourhood teams were among the best in the country. Some teams are only 6 people, you can't expect them to solve every problem themselves, but they are an effective liaison with other services.

Brian Pope - Brockley ward Panel. I'm on Brockley and Ladywell Panels and the police have been working with me - in Ladywell they have helped me turn things around but in Brockley - ever since the sergeant left there have been problems, now we are down to only 3 in the team when there should be 6. Also the sergeants are now being stretched and have to work on two wards at a time. Mr Burton - Across the borough we are 5 constables light at the moment. Recruitment is underway in Brockley but we have to get the right person for the job.

Thomas Joseph - many years ago there was a police station in Catford Hill. I made enquiries a few years ago and it is used for police archiving - I see police going in and out all the time. It is still functional, it is next to my church, Kings Church. - Mr Burton - there's a couple of things - one is that I need to get out more as I don't know about that. We've made a note of it and will find out what it is used for.

Jackie announced that she had taken a written question earlier from Cllr Onuegbu - it is claimed that gang rape of young girls is on the increase in Lewisham - is this true. DCI Wilkinson. Yes it is on the increase. Typically those crimes are reported to us via 3rd parties, as there are huge barriers to reporting for those victims. The Met are looking at dealing with gangs in a more joined up way, its about disrupting things. There will be difficulties - I think the confidence required by those victims to go through the criminal justice system would be huge. I think there were 7 multi perpetrator attacks reported to us last year, this is 7 too many. In my recollection at least half of those were not reported to us directly, they were reported to us via child protection systems such as schools, etc. Following a further question from Cllr Onuegbu DCI Wilkinson noted that these problems weren't even being discussed a few years ago but that didn't mean they weren't happening, but that the systems in place to look out for and protect young people are getting better.

8. LCPCG Stop and Search group - *Gordon Glean* , *Chair*

Gordon spoke to the group about the presentation he gave to the 32 borough commanders and A/Commissioner Tony Eastaugh. He strived to send a community message out so that as a community we could make a difference around Stop and Search. One of the things I got from my networking is that we are far ahead of other boroughs in terms of community relations and community liaison. Having said that there are challenges ahead that I'm really excited about. Of the things that the Met said they would like to do, we are already doing in Lewisham, so I think we have been quite

innovative in terms of the way we interact with our local service. They are talking about police being more accountable for introducing Section 60s - there is already a great relationship around this with the group- they are talking about drugs stops and better intelligence led policing around that. They are also talking about arrest rates - I do have concerns about that - the MET wants 20% "outcome" rate. At the moment the arrest rate is about 4% - a lot could be read into that, how is that going to be achieved without the community feeling an effect - there needs to be more consultation. The local group are looking to change our focus - we need to scrutinise ourselves on behalf of you - are we scrutinising the police in that way that you want us to. We ought to be asking the right questions of our local service. A lot of doors have been opened to the Lewisham S&S scrutiny group over a series of time. We are the benchmark, but will strive to do better.

Questions from the floor

Gurbakhsh Garcha - For many many years there has been a problem of disproportionality in Stop and Search, how fast do you think this needs to change now - what still needs to be done? Gordon - Well if you are simply looking at one area of disproportionality, ethnicity, then yes there is still work to be done, but there are lots of areas of disproportionality, sex, age and it is not just a job for the police to scrutinise that - we have to ask them those challenging questions. We also have to look at our community engagement and how we get them on board with what they are doing so that their behaviour changes.

Richard from LARAG - described a friend that is having a problem (*details were inaudible*) they have been subjected to a serious verbal assault - they have been advised to report to a local police station but have had to wait for over 4 hours on two separate occasions without being able to make the report. Mr Burton suggested that the gentleman pass the details over to him and he could see how far on the system it has got and see what can be done.

Amina, LARAG - The coalition government are saying that they are getting rid of bureaucracy and not having to record stop and search - is this happening in Lewisham In her experience in Lewisham it so rare to see non-black person being stopped that it is worth commenting on. I talked to a lot of young people during the riots and they said they wanted to pay the police back for the way they have been treated. There hasn't been much change since the 70's and the racist behaviour of the police here then. There is disproportionality and racism in the system. I am concerned that you are saying there isn't much disproportionality because I think there is. Less than 2% of Stop and Searches result in an arrest, Dr Richard Stone has suggested that we charge police for wasted time. **Gordon** - I'll have to pass some of that onto Jeremy but I'd really like to invite you to one of our scrutiny meetings. I really agree with some of what you say and refute other bits things have changed a lot since the times you were talking about. I believe that we are going to keep stop and search and stop and account slips. **Jackie** - it was the MPA that made the decision several months ago to keep recording the full details for Stop and Account, across London. It can now be done or not on a force by force basis, and we campaigned for that.

The Chair took one last question from Macey at Second Wave - 2 quick questions - if you are making a complaint against the police on behalf of a young person but the parents won't give their consent, what do you do? Also if the police are harassing a young person, can you make a complaint for that? I don't think they will take young people seriously. My little brother was arrested when he was 12 and held for 9 hours without contacting my mother, but she don't like the police so she won't make a complaint. Macey also said that another young person she knows was trying to make a complaint,

but wasn't able to be taken seriously until she helped and said she was from Second Wave. Mr Burton said that people should feel encouraged to make a complaint if they wanted to, mentioned that it was possible to make a complaint online and offered to speak to Macey after the meeting about both particular cases.

9. Membership applications:

9 ii) LEMP (Lewisham Ethnic Minority Partnership)

Mr Siva Pillai stood up and gave a brief description of the group, LEMP has been going for 26 years and has close links to many other organisations - a particular concern at the moment is elderly people who don't speak English as a first language suffering burglary, and not knowing how to report it or who to talk to, LEMP would like to offer these people help and to interact with the police

The chair noted that the strategy group were recommending the membership application.

David Michael stood up and said that we should encourage every group or member to be part of this group. While not asking the group not to vote for them, he said he had a long history with them but didn't know they still existed - therefore he asked that LEMP should improve their accountability transparency and governance if they want to be part of this group.

The LCPCG agreed that LEMP could become members.

9 i) Friends of Home Park

Antony Scully stood up and spoke about FoHP. The group was formed in April 2009, partly in response to antisocial behaviour in the area, but mostly to improve the park for local residents, there are 10 key members, and although unconstituted the meetings are open to the public. They have adopted the Lewisham Equality and Diversity policy. We make decisions on a show of hands. There are 4 meetings a year and we try to publicise at least one of them with a lot of leaflets and posters. We have worked closely with the local SNTs and we think this would be a good opportunity to network and that we can contribute to the work of the group.

The LCPCG agreed that FoHP could become members.

10. Any Other Business

No other business was raised. Jackie thanked the speakers once again, and also thanked Kellie Williams, an Lewisham Council officer who had given a lot of help in making sure the details got out to the right people. It has been a very productive meeting and she hopes that people will have more confidence after tonight that reporting any crime, not just rape, and getting a professional and sympathetic response.

Finally she reminded the audience that the next meeting will be on **Thursday 1st March** and asked them to ensure that they had signed in the register, as LCPCG need to keep this information for their funders MOPC.

Dates of future meetings:

Thursday 1 March

Tuesday 27 March (AGM)

Tuesday 26 June

Tuesday 9 October

Tuesday 4 December



**Lewisham Borough Commander
Chief Superintendent Jeremy Burton**



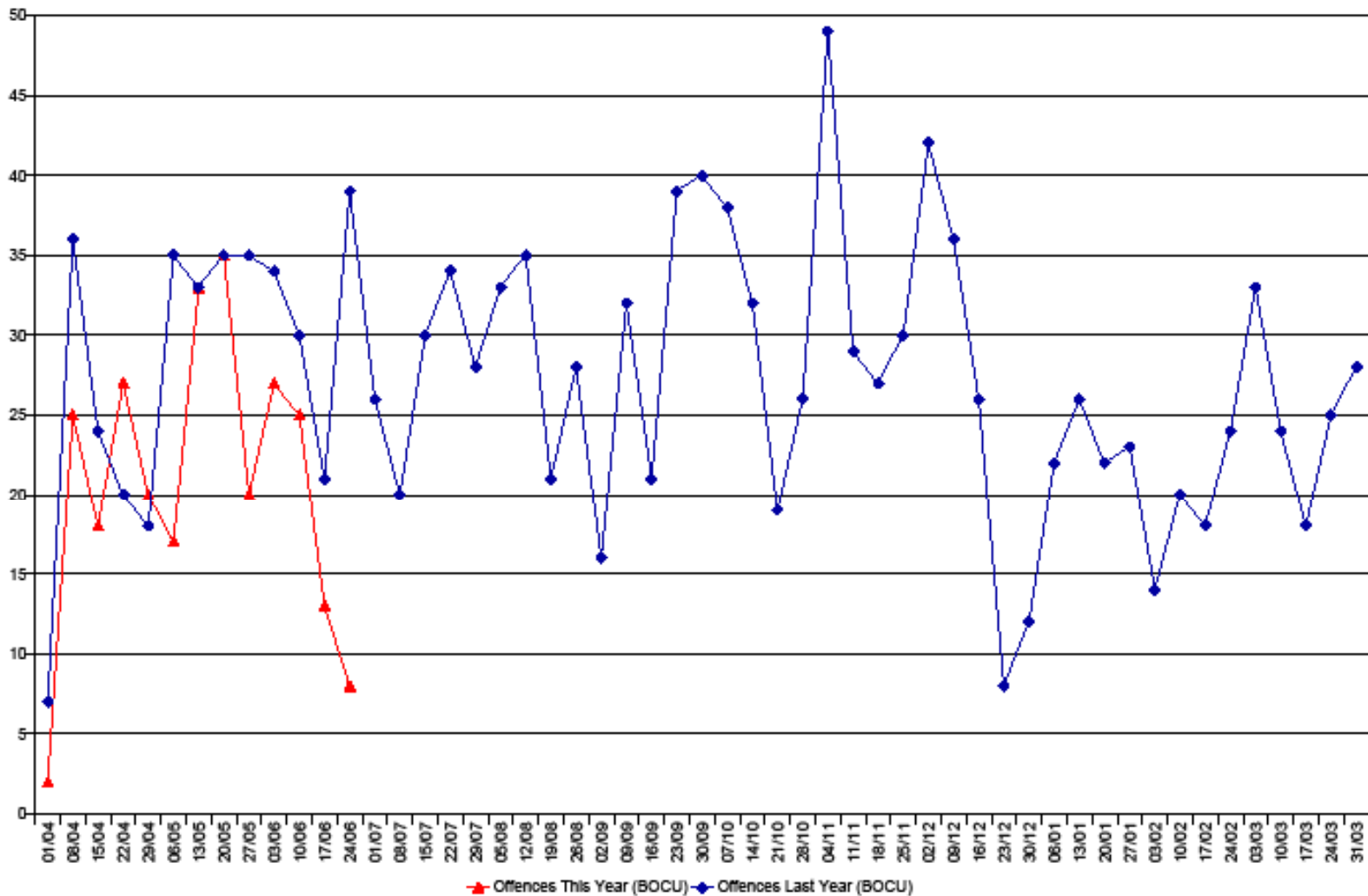
**METROPOLITAN
POLICE**

TOTAL POLICING



Personal Robbery

Personal Robbery between 01/04/2012 and 21/06/2012 by Week for PL



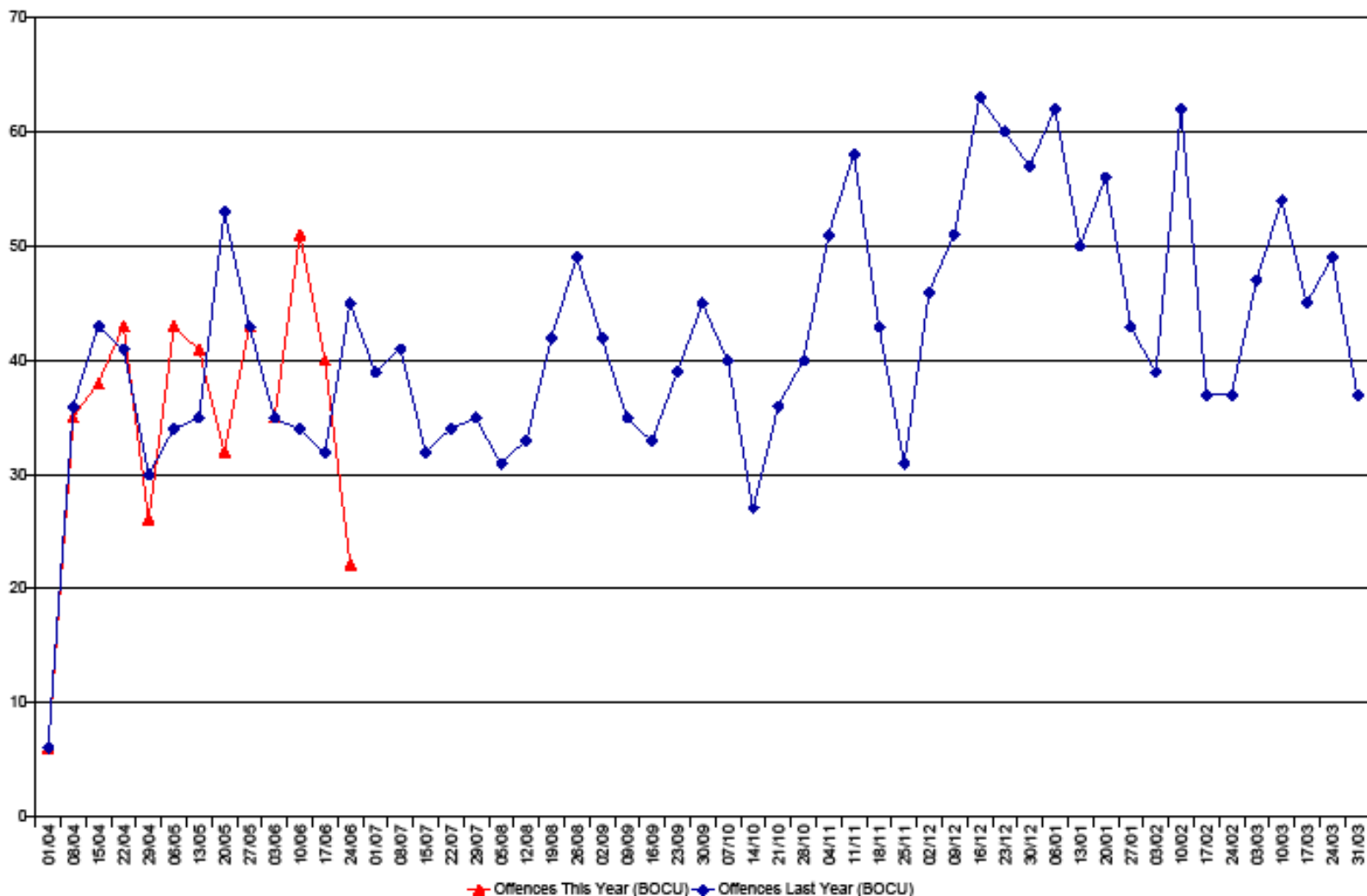
**METROPOLITAN
POLICE**

TOTAL POLICING



Residential Burglary

Residential Burglary between 01/04/2012 and 21/06/2012 by Week for PL



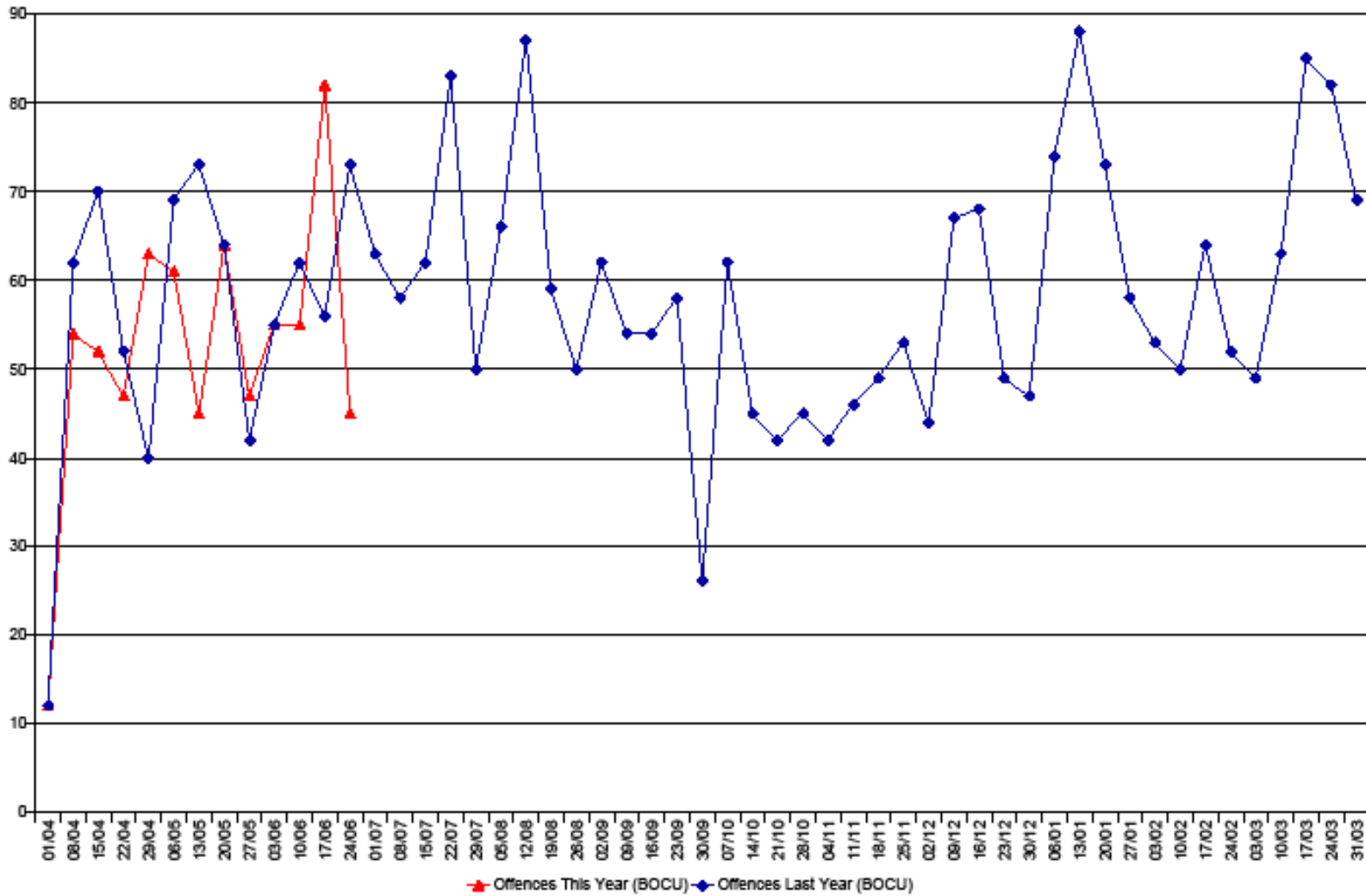
**METROPOLITAN
POLICE**

TOTAL POLICING



Motor Vehicle Crime Offences

Vehicle Crime between 01/04/2012 and 21/06/2012 by Week for PL



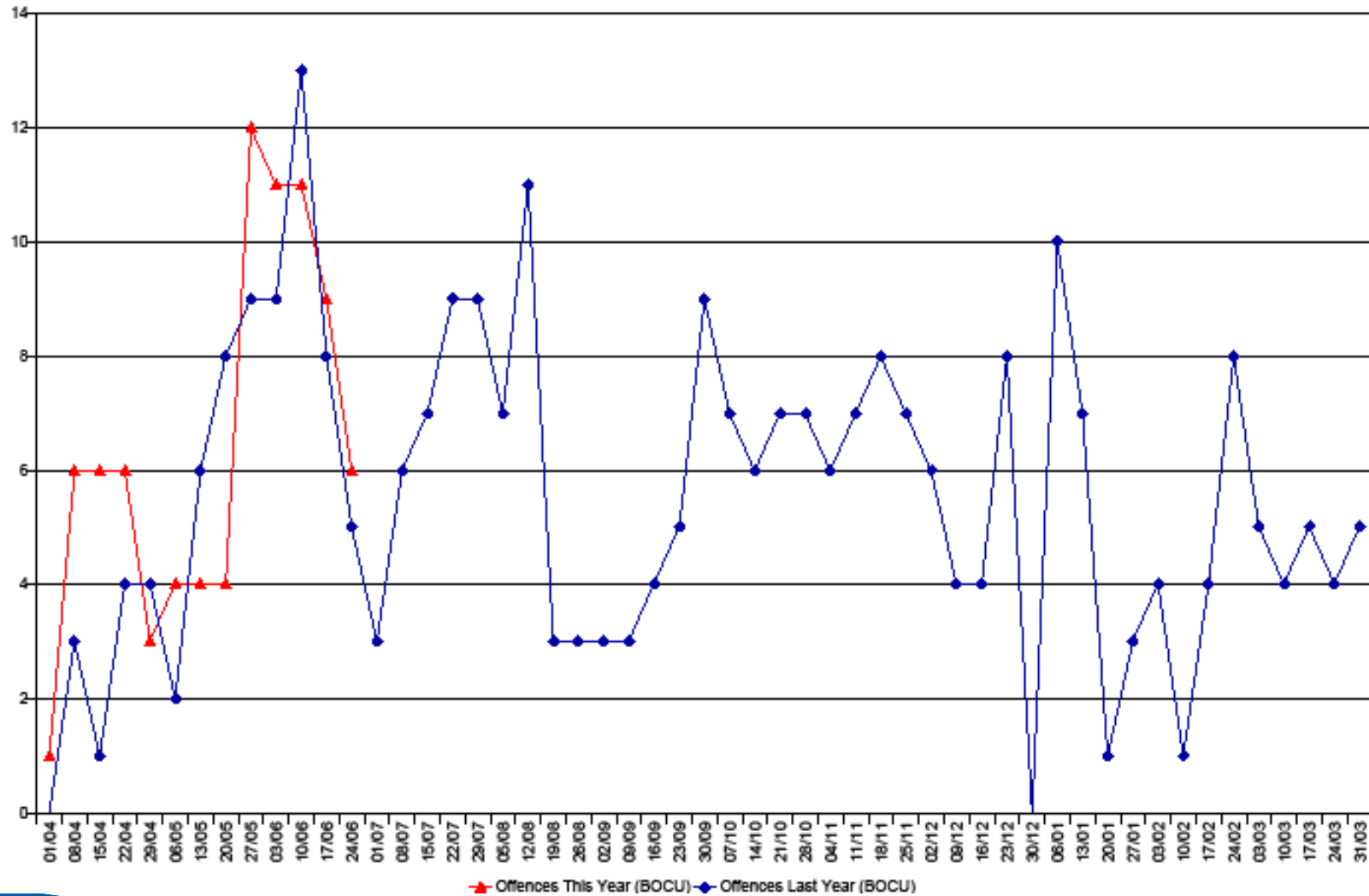
**METROPOLITAN
POLICE**

TOTAL POLICING



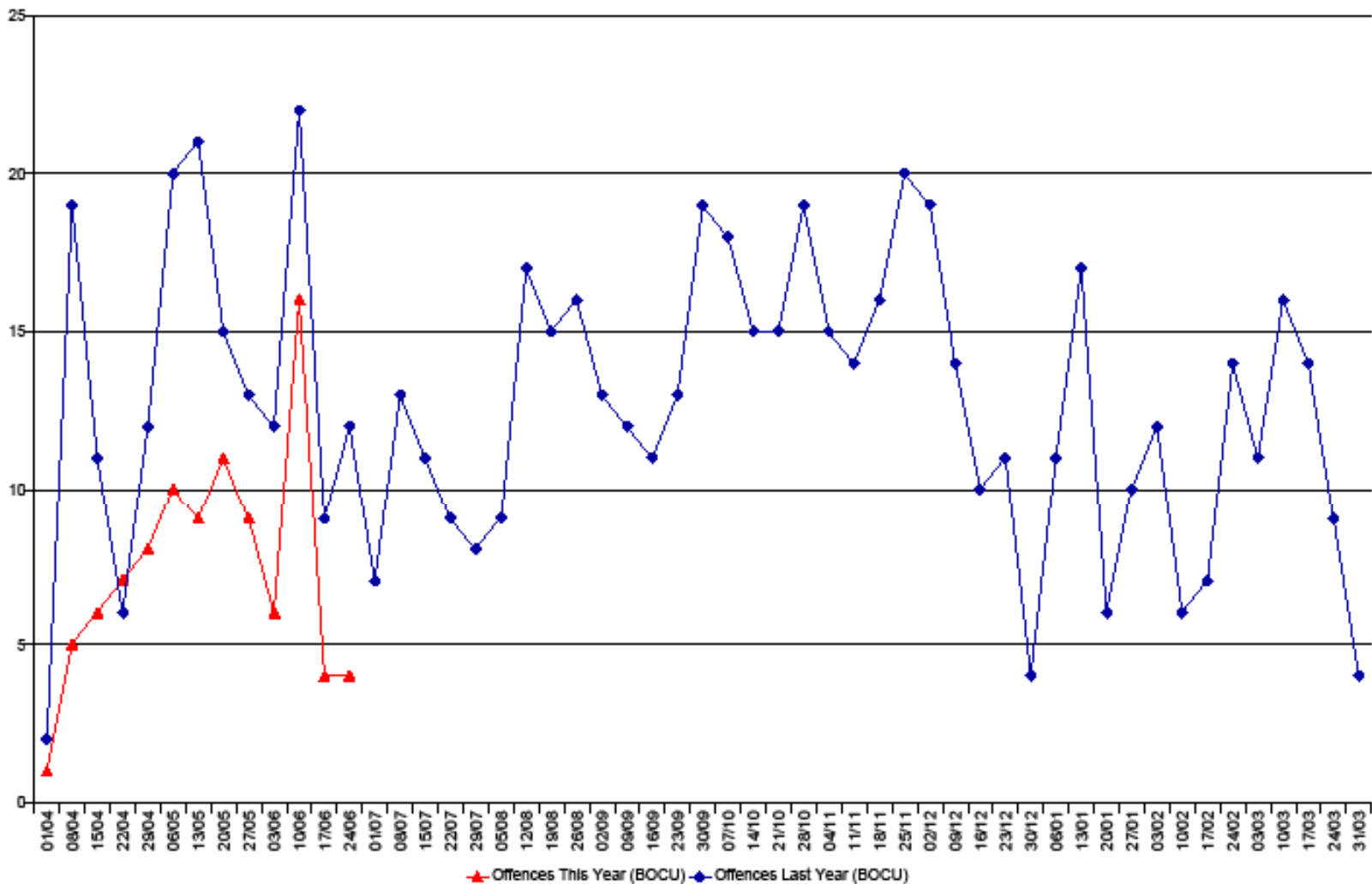
Most Serious Violence

Most Serious Violence between 01/04/2012 and 21/06/2012 by Week for PL



Knife Crime Offences

Knife Crime between 01/04/2012 and 21/06/2012 by Week for PL



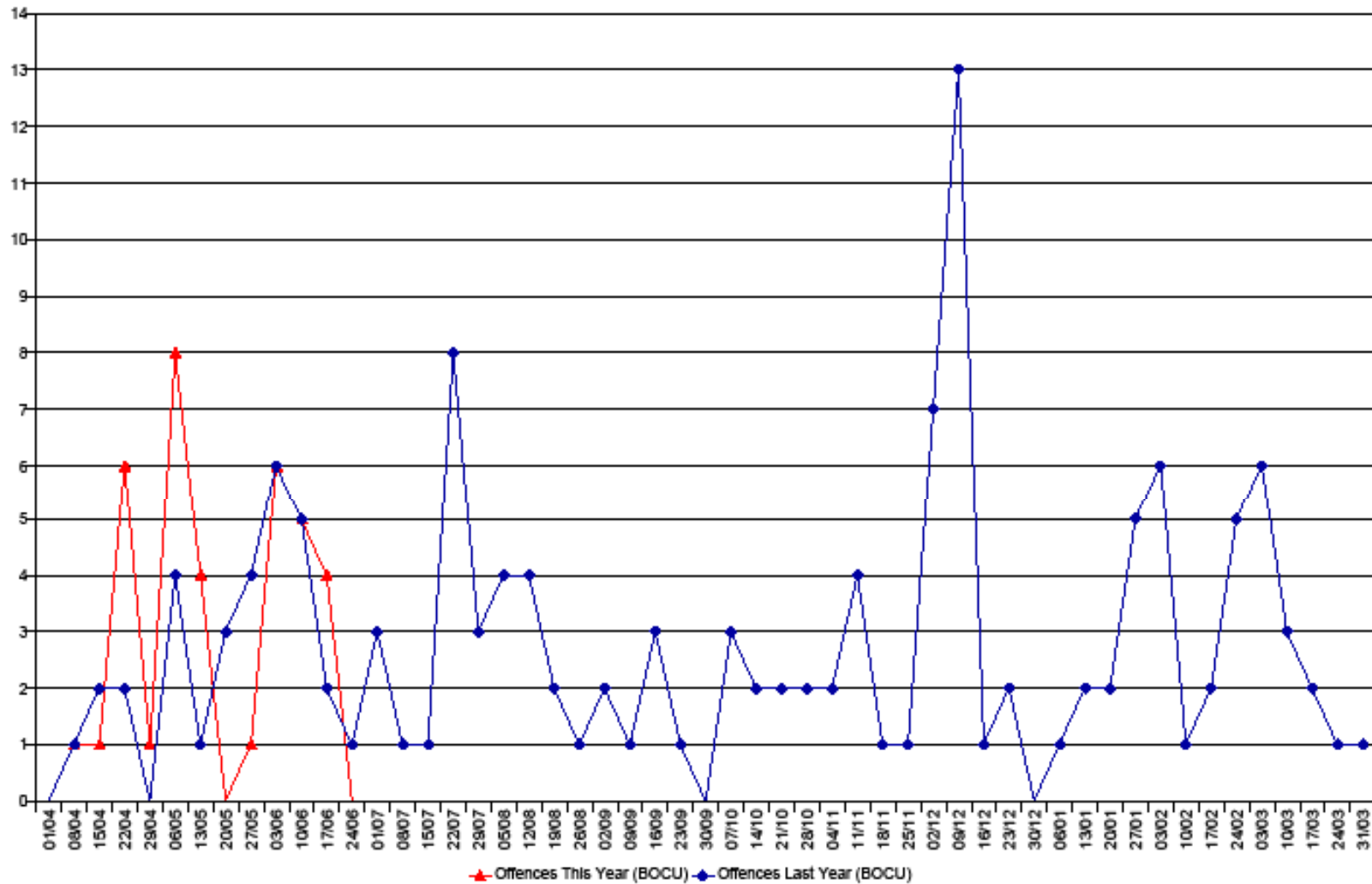
**METROPOLITAN
POLICE**

TOTAL POLICING



Gun Enabled Offences

Gun Crime between 01/04/2012 and 21/06/2012 by Week for PL



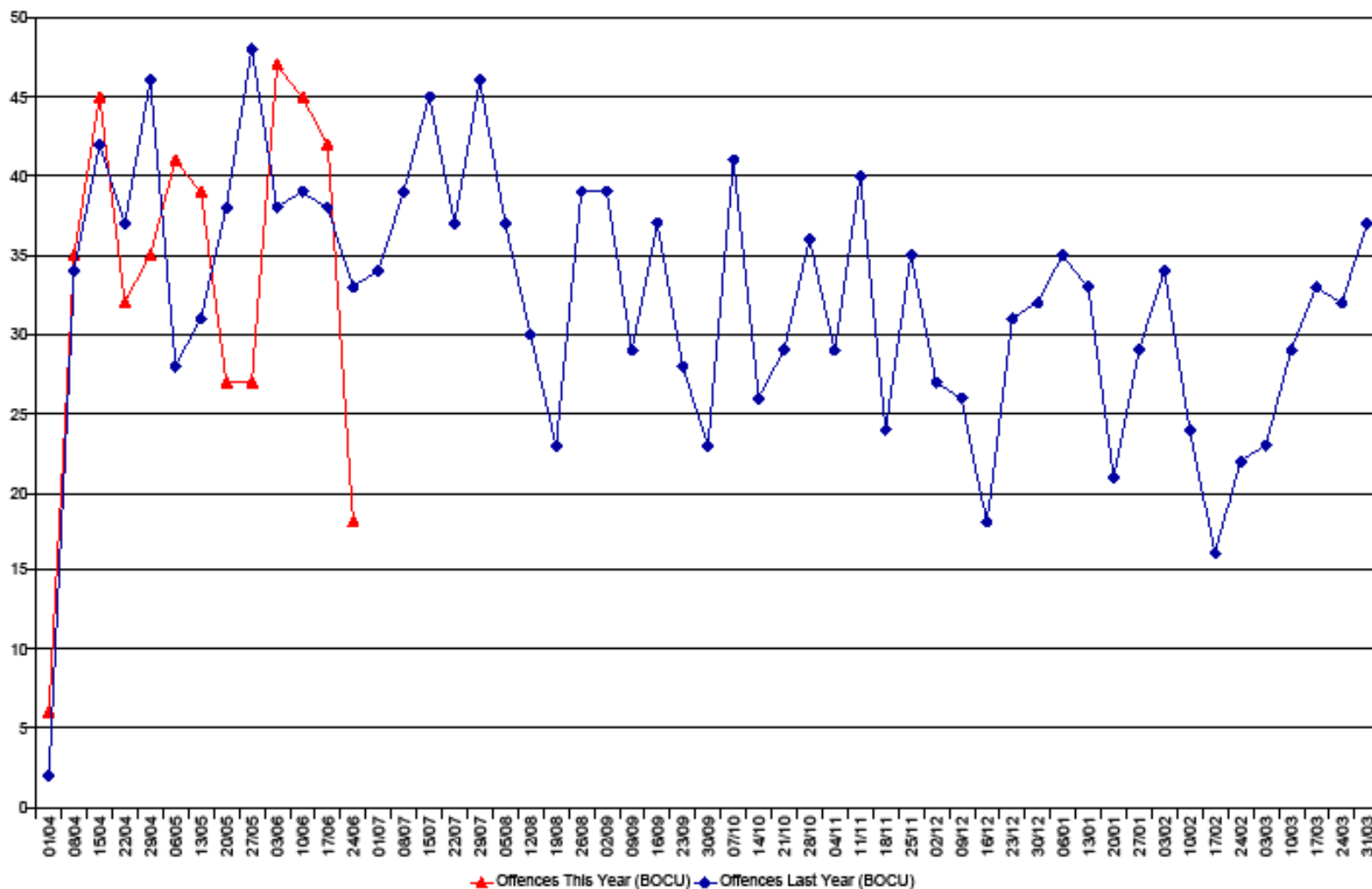
**METROPOLITAN
POLICE**

TOTAL POLICING



Domestic Offences

Domestic Violence between 01/04/2012 and 21/06/2012 by Week for PL



**METROPOLITAN
POLICE**

TOTAL POLICING





METROPOLITAN
POLICE

TOTAL POLICING



GORDON GLEAN

Page 22



LEWISHAM COMMUNITY & POLICE CONSULTATIVE STOP & SEARCH SCRUTINY GROUP

INTRODUCTION

- **IS STOP & SEARCH - OUR BEST FRIEND OR OUR WORSE ENEMY?**
- HAVE WE GOT IT RIGHT IN LEWISHAM?
- We have worked hard in Lewisham to build something tangible, that is capable of being understood and evaluated.
- It is important that the strategic assessment of stop and search involves a wide range of partners and this is already happening in Lewisham. We involve the Local Authority, the Fire Service, Business Crime Reduction Partnership, the Youth Offending Team, Youth Service and other agencies. Because we look at this as one challenge for all to engage.

THE SCRUTINY GROUP

WHAT DO WE DO?

- It is very important that groups scrutinise themselves as well as policing behaviour from time to time.
- Are we getting it right?
- Are we adding value to the overall process?
- Are the things we do reflected in the final act and outcomes?
- Lewisham is reassessing the way we scrutinise and there are 2 strands of work we need to look at going forward.
- WHY are the arrest rates so low, is 9.6% good or are the police getting it wrong 90.4% of the time? Drugs are not one of the policing priorities in Lewisham however, 47.3% of all grounds given were for drugs.
- HOW do we influence the quality of encounters?

THE SCRUTINY GROUP

WHAT DO WE DO?

- **MONITOR DISPROPORTIONALITY**
- **MONITOR SECTION 60 NOTICES**
- **OUTREACH MEETINGS WITH THE LOCAL COMMUNITY ESPECIALLY YOUNG PEOPLE**
- The partnership consisting of Lewisham police, the local authority, the local community, the scrutiny group and other agencies, engage in transparent dialogue looking for answers.
- We believe two way communication is a key attribute to the whole process. However, the approach need to be layered. Closed meetings to share information that is not for public consumption followed by good consistent community engagement. If there is no counter balance the process will always fail.

LEWISHAM POLICE CONSULTATION

- Locally, the police service has opened more doors to the monitoring group over the last 5 years so as to build better relationships and instil more trust and confidence in the scrutiny group and Lewisham communities. We recognise that there will always be local challenges that can only be address in partnership, however: -
- The consultation has always been **transparent, professional** and mostly without bias. We feel that there has been a high level of **integrity** and **willingness to engage** on both sides.
- Developing the local process such as convincing the local police to give us access to attend tasking meetings, dip sampling stop slips, accompany officers on patrols, involving local people in officer training and supplying the additional confidential local data to help the group better evaluate local behaviour, were great leadership choices. I would like to add Lewisham is the envy of most London borough when it comes to police & community engagement.

IS STOP AND SEARCH FAIR?

- The key to the acceptance of Stop and Search as a policing tool is still peoples' perceptions. Unfortunately there are no right answers, stop & search will always be subjective, based on individual feelings rather than on the facts or evidence.
- What do communities reasonably want from stop & search?
- A balance between none and too much will always be a perception game, a local game, so if there is going to be issues such as disproportionality, they need to be justifiable, based on facts and evidence and clearly communicated.
- The police need to show through their data that those using the tool are fair, respectful and without bias.
- We need to see more intelligence lead and more indicators for quality and not quantity.
- More leadership accountability and stewardship.

BUILDING PUBLIC TRUST & CONFIDENCE

- There is a great deal of optimism in terms of the new police partnership team on the borough. The relationship was especially effective whilst working with the partnership Chief Inspector during the August riots. I am convinced that his sensitive handling of events during and post riots, engaging with community members, prevented further conflict on the streets of Lewisham.
- These are the very characteristics communities look for in policing along with the police acceptance of **Constructive Criticism**, **Willingness to Change**, better **Discipline** of those who abuse the system, better **Communication** in terms of rights and public awareness and better **Supervision** of those conducting the task.



BUILDING PUBLIC TRUST & CONFIDENCE

- The police should also look at the reverse prospective and ask themselves this: -
- Realistically how much trust and confidence do we have in the communities that we work with?
- One can't have confidence in something you don't trust
- **Is stop and search your best friend or your worse enemy?**

QUESTION & ANSWER SESSION

Page 30

10/12/2012


9



Stops and Searches Monitoring Mechanism

April 2012

Lewisham

Report Title	Stops and Searches Monitoring Mechanism April 2012
Version	2.1
Protective Marking	Not Protectively Marked
Publication Scheme Y/N	Y
Summary	Borough Stop and Search Monitoring Report
Key Words	Stop, Account, Search
Date of Stop Search Data Extract	14 June 2012
Report Relevant to;	Ops Manager 
Review Date	June 2012
Date Last Printed	14 Jun 2012 15:47
General Information	MPS Stop and Searches Team Tel: 0207 161 0888 Email: StopsandSearches-TPHQ@met.police.uk

Stops and Searches Monitoring Mechanism

Guidance Notes

These are the latest stops and searches figures, the date of download from the Stops database is shown on cover page. Numbers are likely to increase as boroughs continue to enter stops and searches onto the database system.

Borough shown is location of search and not necessarily the borough of the officer conducting the search.

Westminster figures are the sum of searches conducted in Westminster North, Westminster Central and Westminster South.

Population data is unavailable for individual Westminster sectors. Heathrow population data is also unavailable as it has no resident population.

The ethnicity of persons stopped and searched within the central London area are unlikely to reflect the resident population due to large numbers of British and foreign tourists in this region.

Calculations on very small sample sizes (particularly female and 'other' ethnic groups, or low stop and search and arrest numbers) are unlikely to reflect the true nature of stop and search activity in certain boroughs. For example if 4 people were searched in a borough and 2 were arrested, this would lead to an arrest rate of 50%, but with such a small sample size conclusions should not be drawn on this figure.

This data excludes stops carried out under Section 43 of the terrorism act. From March 2009 searches incorrectly entered as code O have been excluded.

Glossary

Section 60 Criminal Justice & Public Order Act 1994 (Sec60)

Where an authorising officer reasonably believes that serious violence may take place or that persons are carrying dangerous instruments or offensive weapons without good reason they may authorise powers for officers in uniform to stop and search any person or vehicles within a defined area and time period.

*Stop and Account

Where an officer requests a person in a public place to account for their actions, their behaviour, their presence in an area or their possession of anything.

Stop and Search (S&S) This is when a police officer stops a member of the public and searches them. The police can only detain members of the public in order to carry out a search when certain conditions have been met. Search powers fall under different areas of legislation which include searching for

- stolen property
- prohibited articles namely offensive weapons or anything used for burglary, theft, deception or criminal damage
- drugs
- guns

Historically searches of unattended vehicles and vessels have made up a very low proportion of search activity.

PACE and Other Stops and Searches

Stops and Searches under PACE (Police and Criminal Evidence Act), S23 Drugs Act, S47 Firearms Act plus a very small number not included in the other categories (e.g. s163 Road Traffic Act)

Ethnic Appearance

The ethnicity of the person stopped as perceived by the officer.

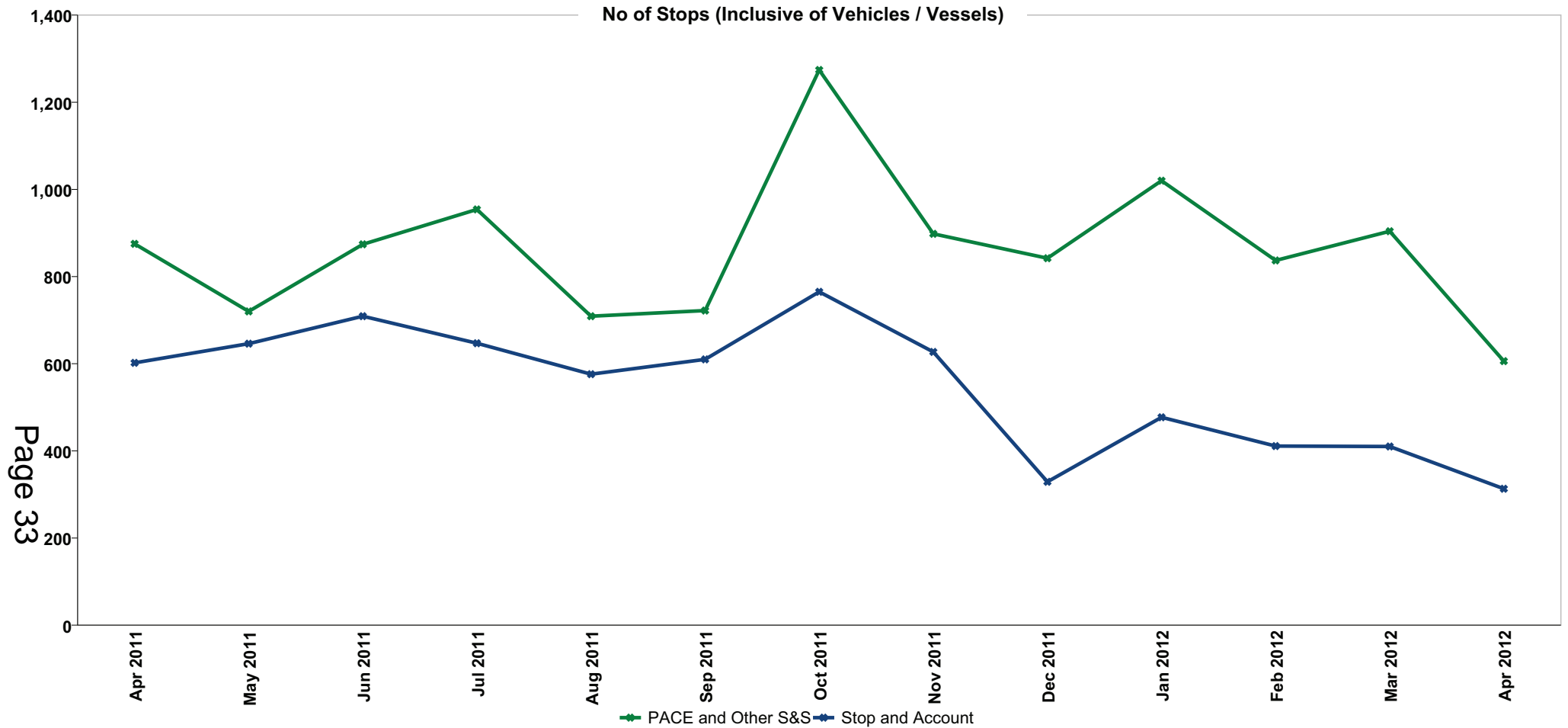
For further information on the mapping of 4+1 groupings to 16+1 census data please see HO report Statistics on Race and the Criminal Justice System 2004 (Appendix B) at <http://www.homeoffice.gov.uk/rds/pubsstatistical.html>

Self Defined Ethnicity (SDE)

The ethnic group as defined by the person stopped (National Census categories).

Arrest Rate Percentage rate which is determined by dividing the number of persons arrested resulting from searches by the total number of persons searched.

Lewisham- All Searches & Stop and Account* (excluding sec60)

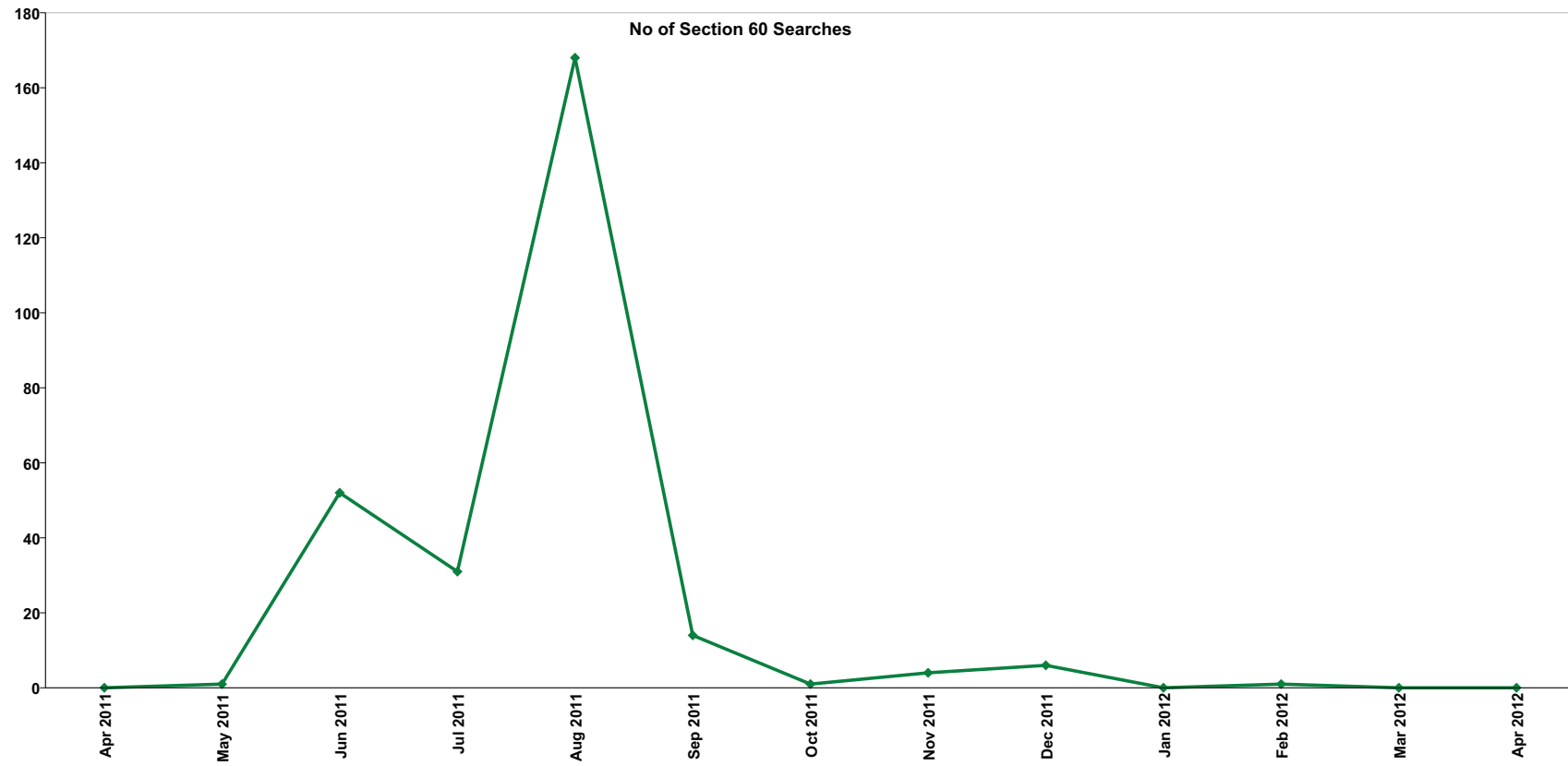


Totals include searches of unattended vehicles / vessels as well as persons

Lewisham	2011									2012			
	Apr	May	Jun	Jul	Aug	Sep	Oct	Nov	Dec	Jan	Feb	Mar	Apr
PACE and Other S&S	875	720	874	954	709	722	1,274	898	842	1,020	837	904	606
Stop and Account	602	646	709	647	576	610	765	627	329	477	411	410	313

* See Glossary

Lewisham- All section 60 Searches

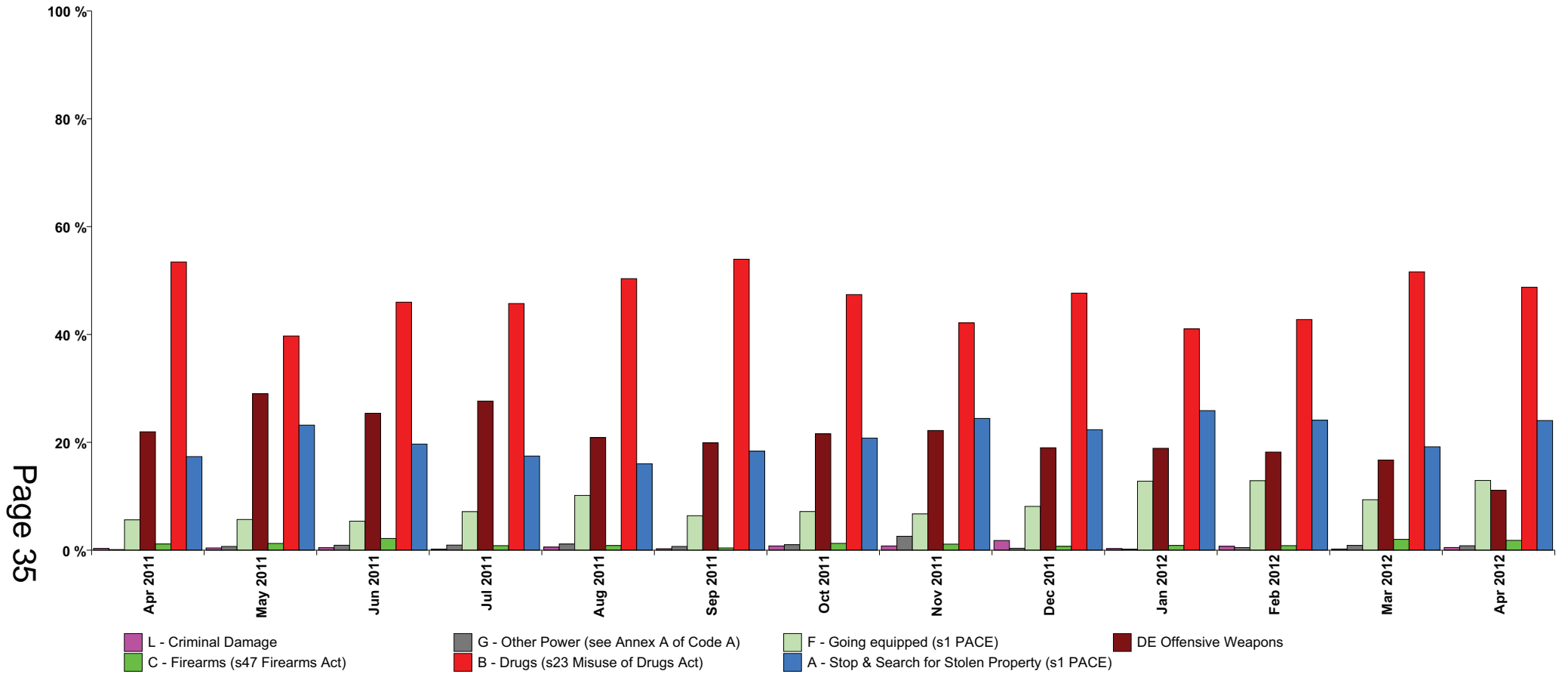


Page 34

Totals include searches of unattended vehicles / vessels as well as persons

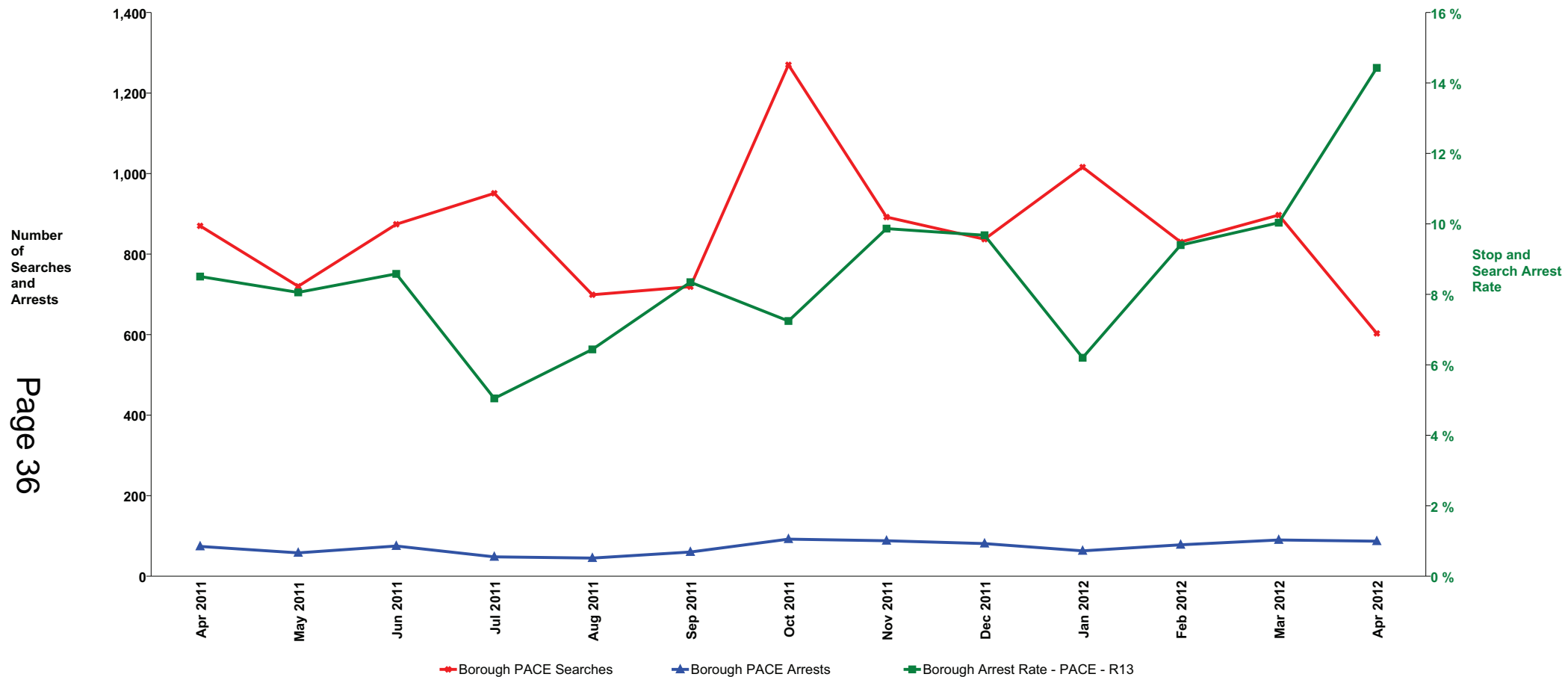
Lewisham	Apr 11	May 11	Jun 11	Jul 11	Aug 11	Sep 11	Oct 11	Nov 11	Dec 11	Jan 12	Feb 12	Mar 12	Apr 12
S60	0	1	52	31	168	14	1	4	6	0	1	0	0

Lewisham - Stop & Searches by Reason (excluding sec60) -



Reason for Stop and Search. Excludes Vehicle only searches Lewisham	2011														2012											
	Apr 2011		May 2011		Jun 2011		Jul 2011		Aug 2011		Sep 2011		Oct 2011		Nov 2011		Dec 2011		Jan 2012		Feb 2012		Mar 2012		Apr 2012	
	%	No.	%	No.	%	No.	%	No.	%	No.	%	No.	%	No.	%	No.	%	No.	%	No.	%	No.	%	No.	%	No.
A - Stop & Search for Stolen Property (s1 PACE)	17.4 %	151	23.2 %	167	19.7 %	172	17.5 %	166	16.0 %	112	18.4 %	132	20.8 %	264	24.4 %	218	22.3 %	187	25.9 %	263	24.1 %	200	19.2 %	172	24.0 %	145
B - Drugs (s23 Misuse of Drugs Act)	53.4 %	465	39.7 %	286	46.0 %	402	45.7 %	435	50.4 %	352	54.0 %	388	47.4 %	602	42.2 %	376	47.7 %	399	41.0 %	417	42.8 %	355	51.6 %	463	48.8 %	294
C - Firearms (s47 Firearms Act)	1.1 %	10	1.3 %	9	2.2 %	19	0.8 %	8	0.9 %	6	0.4 %	3	1.3 %	16	1.1 %	10	0.7 %	6	0.9 %	9	0.8 %	7	2.0 %	18	1.8 %	11
DE Offensive Weapons	22.0 %	191	29.0 %	209	25.4 %	222	27.7 %	263	20.9 %	146	19.9 %	143	21.6 %	274	22.2 %	198	19.0 %	159	18.9 %	192	18.2 %	151	16.7 %	150	11.1 %	67
F - Going equipped (s1 PACE)	5.6 %	49	5.7 %	41	5.4 %	47	7.2 %	68	10.2 %	71	6.4 %	46	7.2 %	91	6.7 %	60	8.1 %	68	12.8 %	130	12.9 %	107	9.4 %	84	12.9 %	78
G - Other Power (see Annex A of Code A)	0.1 %	1	0.7 %	5	0.9 %	8	0.9 %	9	1.1 %	8	0.7 %	5	1.0 %	13	2.6 %	23	0.4 %	3	0.2 %	2	0.5 %	4	0.9 %	8	0.8 %	5
L - Criminal Damage	0.3 %	3	0.4 %	3	0.5 %	4	0.2 %	2	0.6 %	4	0.3 %	2	0.8 %	10	0.8 %	7	1.8 %	15	0.3 %	3	0.7 %	6	0.2 %	2	0.5 %	3
Total: Number of Searches		870		720		874		951		699		719		1,270		892		837		1,016		830		897		603

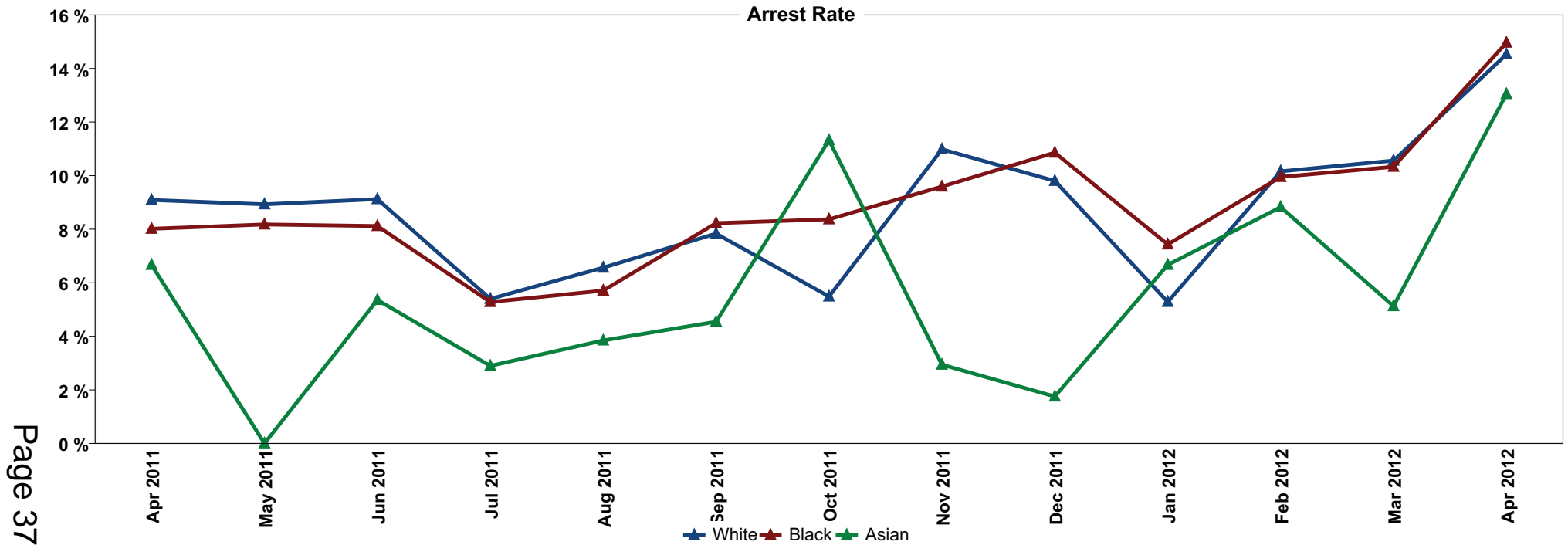
Lewisham - Arrest Rates from Searches (excluding sec60)



Lewisham	Apr 2011	May 2011	Jun 2011	Jul 2011	Aug 2011	Sep 2011	Oct 2011	Nov 2011	Dec 2011	Jan 2012	Feb 2012	Mar 2012	Apr 2012
No of Searches	870	720	874	951	699	719	1,270	892	837	1,016	830	897	603
No of Arrests	74	58	75	48	45	60	92	88	81	63	78	90	87
Arrest Rate	8.5 %	8.1 %	8.6 %	5.0 %	6.4 %	8.3 %	7.2 %	9.9 %	9.7 %	6.2 %	9.4 %	10.0 %	14.4 %

Excludes Vehicle only searches
 No of Arrests for All Reasons resulting from Searches other than sec60

Lewisham - Ethnic Appearance of People Searched and Subsequently Arrested (excluding sec60)



Page 37

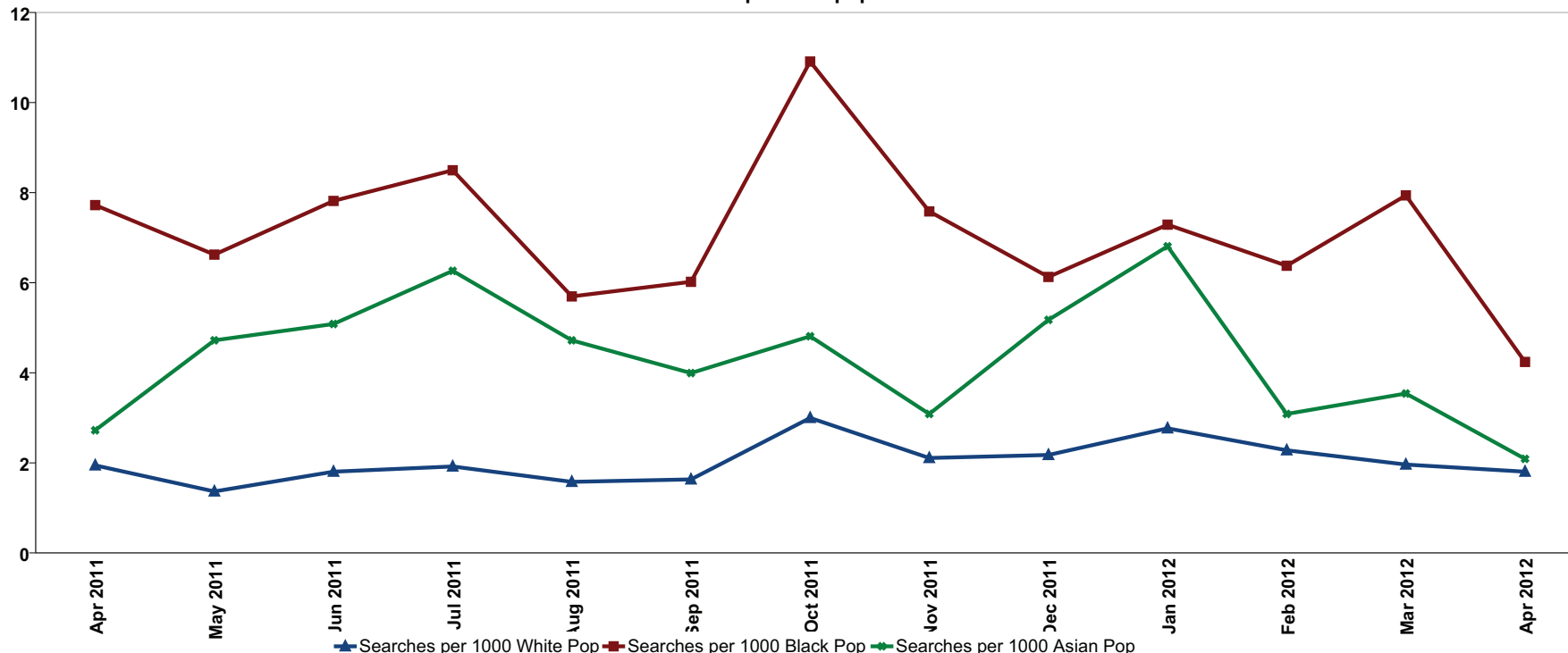
Searches Arrests	2011												2012													
	Apr		May		Jun		Jul		Aug		Sep		Oct		Nov		Dec		Jan		Feb		Mar		Apr	
White	319	29	224	20	296	27	315	17	259	17	268	21	492	27	346	38	357	35	454	24	374	38	322	34	296	43
Black	499	40	428	35	505	41	549	29	368	21	389	32	705	59	490	47	396	43	471	35	412	41	513	53	274	41
Asian	30	2	52	0	56	3	69	2	52	2	44	2	53	6	34	1	57	1	75	5	34	3	39	2	23	3
Other	20	3	16	3	16	4	17	0	20	5	17	5	17	0	19	2	21	1	16	1	11	0	23	2	10	0
Not Stated	2	0		0	1	0	1	0		0	1	0	2	0	4	0	6	1	1	0	4	1	1	0	3	0
		0		0		0		0		0		0	1	0		0		0		0		0		0		0

Excludes Vehicle only searches
No of Arrests resulting from Searches (excluding sec60)

Arrest Rate	2011									2012			
	Apr	May	Jun	Jul	Aug	Sep	Oct	Nov	Dec	Jan	Feb	Mar	Apr
White	9.1%	8.9%	9.1%	5.4%	6.6%	7.8%	5.5%	11.0%	9.8%	5.3%	10.2%	10.6%	14.5%
Black	8.0%	8.2%	8.1%	5.3%	5.7%	8.2%	8.4%	9.6%	10.9%	7.4%	10.0%	10.3%	15.0%
Asian	6.7%	0.0%	5.4%	2.9%	3.8%	4.5%	11.3%	2.9%	1.8%	6.7%	8.8%	5.1%	13.0%
Other	15.0%	18.8%	25.0%	0.0%	25.0%	29.4%	0.0%	10.5%	4.8%	6.3%	0.0%	8.7%	0.0%
Not Stated	0.0%		0.0%	0.0%		0.0%	0.0%	0.0%	16.7%	0.0%	25.0%	0.0%	0.0%

Lewisham - Ethnic Appearance of People Searched per 1000 population (2001 Census Data) excluding sec60

Number of Searches per 1000 population

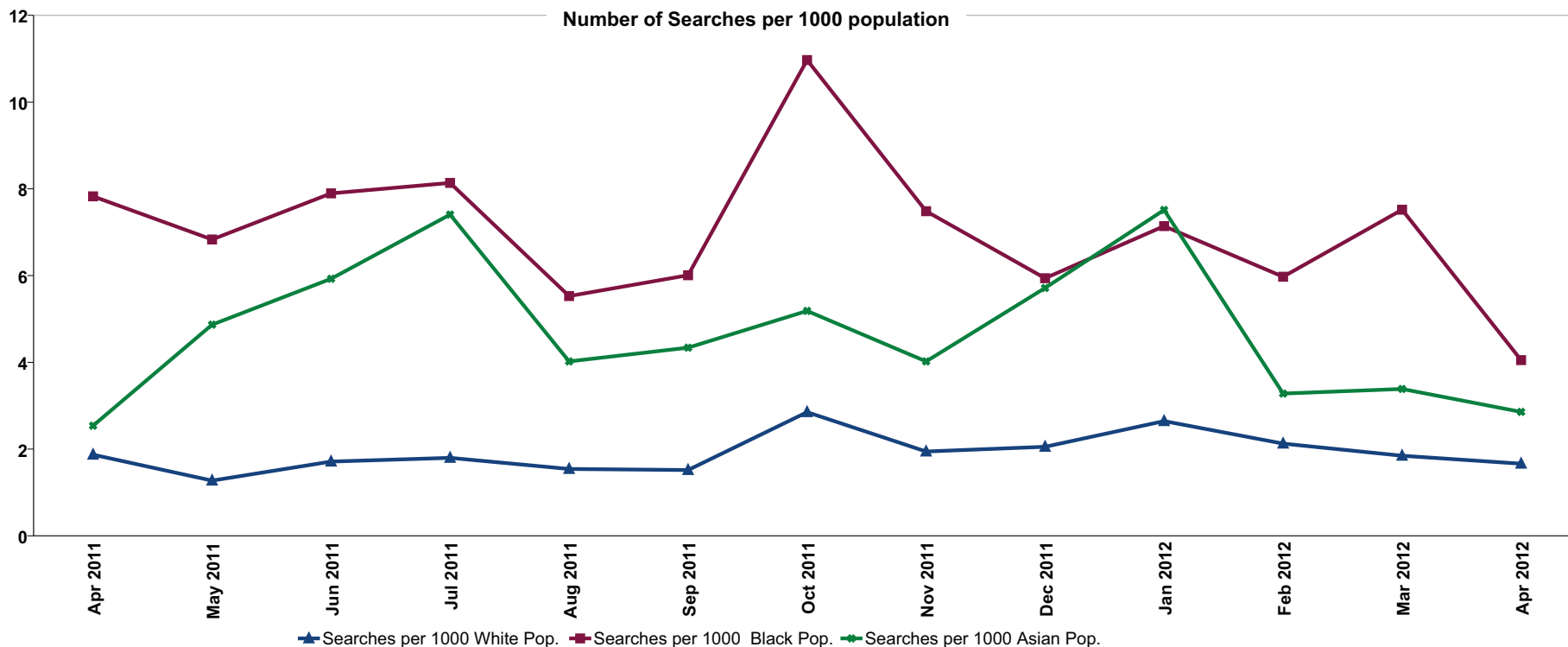


Excludes vehicle/vessel only searches

	2011										2012			
	Apr	May	Jun	Jul	Aug	Sep	Oct	Nov	Dec	Jan	Feb	Mar	Apr	
White	1.94 (319)	1.37 (224)	1.80 (296)	1.92 (315)	1.58 (259)	1.63 (268)	3.00 (492)	2.11 (346)	2.18 (357)	2.77 (454)	2.28 (374)	1.96 (322)	1.80 (296)	
Black	7.72 (499)	6.62 (428)	7.82 (505)	8.50 (549)	5.70 (368)	6.02 (389)	10.91 (705)	7.58 (490)	6.13 (396)	7.29 (471)	6.38 (412)	7.94 (513)	4.24 (274)	
Asian	2.72 (30)	4.72 (52)	5.08 (56)	6.26 (69)	4.72 (52)	3.99 (44)	4.81 (53)	3.09 (34)	5.17 (57)	6.81 (75)	3.09 (34)	3.54 (39)	2.09 (23)	
Other	2.18 (20)	1.74 (16)	1.74 (16)	1.85 (17)	2.18 (20)	1.85 (17)	1.85 (17)	2.07 (19)	2.29 (21)	1.74 (16)	1.20 (11)	2.50 (23)	1.09 (10)	
% of Searches with no Ethnicity recorded	0.2% (2)	()	0.1% (1)	0.1% (1)	()	0.1% (1)	0.2% (2)	0.4% (4)	0.7% (6)	0.1% (1)	0.5% (4)	0.1% (1)	0.5% (3)	

	Population	
White	164,098	This report uses 2001 Census data. This is held in 16+1 format and the recorded ethnic appearance of the Stop/Search (4+1) must be mapped to the appropriate 16+1 Census categories. The categories are mapped as follows: White = White British, White Irish and Any other White Background. Black = Black or Black British, Caribbean, African, Mixed White and Black Caribbean, Mixed White and Black African, and any other Black Background Asian = Asian or Asian British Indian, Pakistani, Bangladeshi, Mixed White and Asian and any other Asian background. Other = Chinese or other Ethnic Group <i>Note: Due to differences in the way ethnic appearance (EA) and self defined ethnicity (SDE) are recorded, groupings may differ.</i>
Black	64,615	
Asian	11,016	
Other	9,185	
Total	248,914	

Lewisham - Self Defined Ethnicity of People Searched per 1000 population (2001 Census Data) excluding sec60



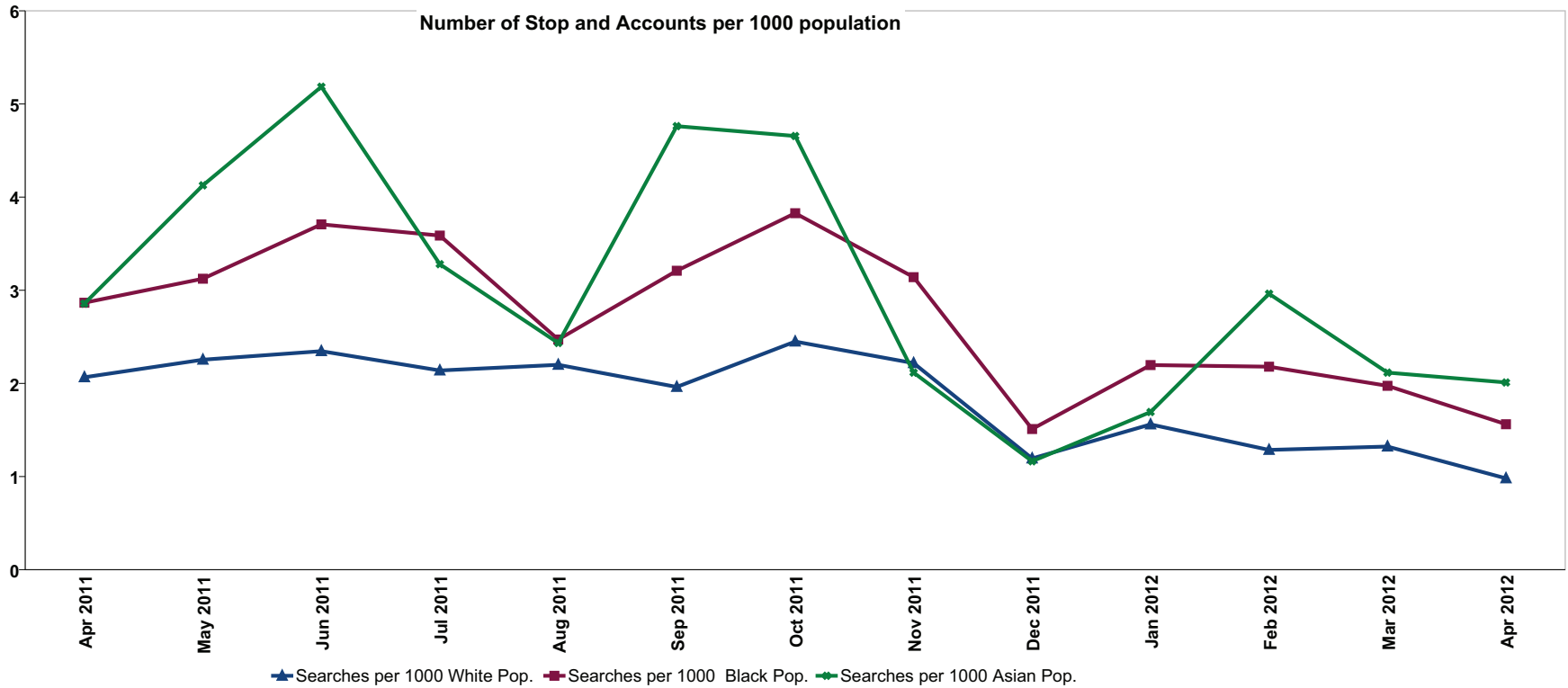
Excludes vehicle/vessel only searches

	2011									2012			
	Apr	May	Jun	Jul	Aug	Sep	Oct	Nov	Dec	Jan	Feb	Mar	Apr
White	1.87 (307)	1.27 (209)	1.71 (281)	1.80 (295)	1.54 (253)	1.52 (249)	2.85 (468)	1.94 (319)	2.05 (337)	2.64 (434)	2.13 (349)	1.85 (303)	1.66 (273)
Black	7.83 (456)	6.83 (398)	7.90 (460)	8.14 (474)	5.53 (322)	6.01 (350)	10.97 (639)	7.48 (436)	5.94 (346)	7.14 (416)	5.97 (348)	7.52 (438)	4.05 (236)
Asian	2.54 (24)	4.87 (46)	5.93 (56)	7.41 (70)	4.02 (38)	4.34 (41)	5.19 (49)	4.02 (38)	5.71 (54)	7.51 (71)	3.28 (31)	3.39 (32)	2.86 (27)
Other	3.27 (56)	2.10 (36)	2.69 (46)	3.80 (65)	3.27 (56)	2.40 (41)	4.33 (74)	3.39 (58)	3.21 (55)	2.81 (48)	3.39 (58)	3.33 (57)	2.05 (35)
% of Searches with unknown Self Defined Ethnicity	3.1% (27)	4.3% (31)	3.5% (31)	4.9% (47)	4.3% (30)	5.3% (38)	3.1% (40)	4.7% (42)	5.4% (45)	4.7% (48)	5.9% (49)	7.6% (68)	5.8% (35)

	Population
White	164,098
Black	58,258
Asian	9,450
Other	17,108
Total	248,914

This report uses 2001 Census data. This is held in 16+1 format and the recorded ethnic appearance of the Stop/Search must be mapped to the appropriate 16+1 Census categories. The categories are mapped as follows;
 White = White British, White Irish and Any other White Background.
 Black = Black or Black British, Caribbean, African, and any other Black Background
 Asian = Asian or Asian British Indian, Pakistani, Bangladeshi and any other Asian background.
 Other = Chinese or other Ethnic Group, Mixed White and Black Caribbean, Mixed White and Black African and Mixed White and Asian
Note: Due to differences in the way ethnic appearance (EA) and self defined ethnicity (SDE) are recorded, groupings may differ.

Lewisham - Self Defined Ethnicity of People Stopped and held to Account* (2001 Census Data)



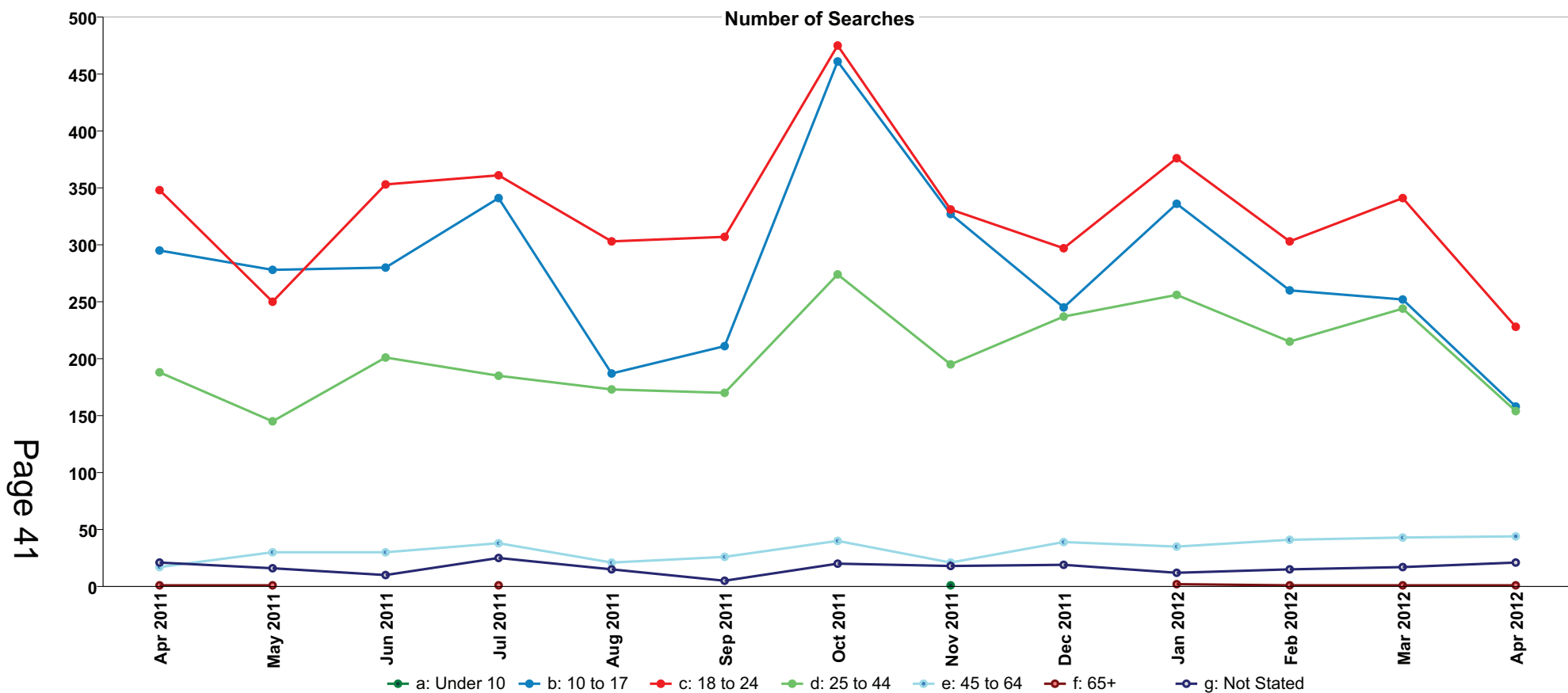
Excludes vehicle/vessel only searches

	2011									2012			
	Apr	May	Jun	Jul	Aug	Sep	Oct	Nov	Dec	Jan	Feb	Mar	Apr
White	2.07 (339)	2.25 (370)	2.35 (385)	2.14 (351)	2.20 (361)	1.96 (322)	2.45 (402)	2.22 (364)	1.19 (196)	1.56 (256)	1.29 (211)	1.32 (217)	0.98 (161)
Black	2.87 (167)	3.12 (182)	3.71 (216)	3.59 (209)	2.47 (144)	3.21 (187)	3.83 (223)	3.14 (183)	1.51 (88)	2.20 (128)	2.18 (127)	1.97 (115)	1.56 (91)
Asian	2.86 (27)	4.13 (39)	5.19 (49)	3.28 (31)	2.43 (23)	4.76 (45)	4.66 (44)	2.12 (20)	1.16 (11)	1.69 (16)	2.96 (28)	2.12 (20)	2.01 (19)
Other	2.05 (35)	1.64 (28)	1.46 (25)	1.40 (24)	0.99 (17)	0.88 (15)	1.52 (26)	1.46 (25)	1.17 (20)	1.81 (31)	1.46 (25)	1.46 (25)	0.76 (13)
% of Stops and Accounts with unknown Self Defined Ethnicity	5.6% (34)	4.2% (27)	4.8% (34)	4.9% (32)	5.4% (31)	6.7% (41)	9.2% (70)	5.6% (35)	4.3% (14)	9.6% (46)	4.9% (20)	8.0% (33)	9.3% (29)

	Population	
White	164,098	This report uses 2001 Census data. This is held in 16+1 format and the recorded ethnic appearance of the Stop/Search must be mapped to the appropriate 16+1 Census categories. The categories are mapped as follows: White = White British, White Irish and Any other White Background. Black = Black or Black British, Caribbean, African, and any other Black Background Asian = Asian or Asian British Indian, Pakistani, Bangladeshi and any other Asian background. Other = Chinese or other Ethnic Group, Mixed White and Black Caribbean, Mixed White and Black African and Mixed White and Asian <i>Note: Due to differences in the way ethnic appearance (EA) and self defined ethnicity (SDE) are recorded, groupings may differ.</i>
Black	58,258	
Asian	9,450	
Other	17,108	
Total	248,914	

* See Glossary

Lewisham - Searches by Age Group (excluding sec60)



	Apr 2011		May 2011		Jun 2011		Jul 2011		Aug 2011		Sep 2011		Oct 2011		Nov 2011		Dec 2011		Jan 2012		Feb 2012		Mar 2012		Apr 2012			
	%	No.	%	No.	%	No.	%	No.	%	No.	%	No.	%	No.	%	No.	%	No.	%	No.	%	No.	%	No.	%	No.		
a: Under 10	0.0 %	0	0.0 %	0	0.0 %	0	0.0 %	0	0.0 %	0	0.0 %	0	0.0 %	0	0.1 %	1	0.0 %	0	0.0 %	0	0.0 %	0	0.0 %	0	0.0 %	0	0.0 %	0
b: 10 to 17	33.9 %	295	38.6 %	278	32.0 %	280	35.9 %	341	26.8 %	187	29.3 %	211	36.3 %	461	36.6 %	327	29.3 %	245	33.0 %	336	31.1 %	260	28.1 %	252	26.1 %	158		
c: 18 to 24	40.0 %	348	34.7 %	250	40.4 %	353	38.0 %	361	43.3 %	303	42.7 %	307	37.4 %	475	37.1 %	331	35.5 %	297	37.0 %	376	36.3 %	303	38.0 %	341	37.6 %	228		
d: 25 to 44	21.6 %	188	20.1 %	145	23.0 %	201	19.5 %	185	24.7 %	173	23.6 %	170	21.6 %	274	21.8 %	195	28.3 %	237	25.2 %	256	25.7 %	215	27.2 %	244	25.4 %	154		
e: 45 to 64	2.0 %	17	4.2 %	30	3.4 %	30	4.0 %	38	3.0 %	21	3.6 %	26	3.1 %	40	2.4 %	21	4.7 %	39	3.4 %	35	4.9 %	41	4.8 %	43	7.3 %	44		
f: 65+	0.1 %	1	0.1 %	1	0.0 %	0	0.1 %	1	0.0 %	0	0.0 %	0	0.0 %	0	0.0 %	0	0.0 %	0	0.2 %	2	0.1 %	1	0.1 %	1	0.2 %	1		
g: Not Stated	2.4 %	21	2.2 %	16	1.1 %	10	2.6 %	25	2.1 %	15	0.7 %	5	1.6 %	20	2.0 %	18	2.3 %	19	1.2 %	12	1.8 %	15	1.9 %	17	3.5 %	21		

Lewisham - PACE and Other Stop and Search (excl. S601) - Current Month vs. 2001 Census Population Data

April 2012

Ethnicity by 1,000 Head of Population				
Lewisham	White Searches per 1000 White Pop	Black Searches per 1000 Black Pop	Asian Searches per 1000 Asian Pop	Other Searches per 1000 Other Pop
Self-Defined Ethnicity (SDE)	1.7	4.1	2.9	2.0
Ethnic Appearance (EA)	1.8	4.2	2.1	1.1

Ethnicity Ratio by 1,000 Head of Population		
Searches per 1000 population Ratio Black:White	Searches per 1000 population Ratio Asian:White	% of Searches without record of ethnicity
2.4	1.7	5.8 %
2.4	1.2	0.5 %

Age Group by 1,000 Head of Population							
	Under 10	10 to 17	18 to 24	25 to 44	45 to 64	65+	% of Searches without Age record
Lewisham	0	6.5	9.4	1.6	1.0	0.0	3.5 %
MPS	0.0	10.9	16.7	3.6	1.0	0.1	2.3 %

Proportion by Age Group							
	a: Under 10	b: 10 to 17	c: 18 to 24	d: 25 to 44	e: 45 to 64	f: 65+	g: NS
Lewisham	0.0 %	26.1 %	37.6 %	25.4 %	7.3 %	0.2 %	3.5 %

	a: Under 10	b: 10 to 17	c: 18 to 24	d: 25 to 44	e: 45 to 64	f: 65+	g: NS
MPS	0.0 %	24.6 %	38.2 %	29.9 %	4.8 %	0.2 %	2.3 %

Gender by 1,000 Head of Population			
	Male	Female	Total
Lewisham	4.8	0.2	2.4

Vehicle Only Searches	
Lewisham	3

Lewisham - Stops and Account* - 2001 Census Population Data

April 2012

Ethnicity by 1,000 Head of Population				
Lewisham	White Stop and Account per 1000 White Pop	Black Stop and Account per 1000 Black Pop	Asian Stop and Account per 1000 Asian Pop	Other Stop and Account per 1000 Other Pop
Self-Defined Ethnicity (SDE)	1.0	1.6	2.0	0.8

Ethnicity Ratio by 1,000 Head of Population		
Stops per 1000 population Ratio Black:White	Stops per 1000 population Ratio Asian:White	% of Stops and Account without record of ethnicity
1.6	2.0	0.1

Lewisham - PACE and Other Stop and Search (excl. S601) - Last 12 Months vs. 2001 Census Population Data

May 2011 to April 2012

Ethnicity by 1,000 Head of Population				
Lewisham	White Searches per 1000 White Pop	Black Searches per 1000 Black Pop	Asian Searches per 1000 Asian Pop	Other Searches per 1000 Other Pop
Self-Defined Ethnicity (SDE)	23.0	83.5	58.5	36.8
Ethnic Appearance (EA)	24.4	85.1	53.4	22.1

Ethnicity Ratio by 1,000 Head of Population		
Searches per 1000 population Ratio Black:White	Searches per 1000 population Ratio Asian:White	% of Searches without record of ethnicity
3.6	2.5	4.9 %
3.5	2.2	0.2 %

Age Group by 1,000 Head of Population							
	Under 10	10 to 17	18 to 24	25 to 44	45 to 64	65+	% of Searches without Age record
Lewisham	0.0	137.6	162.4	26.0	9.1	0.3	1.9 %
MPS	0.1	165.9	259.5	53.8	15.6	0.9	2.4 %

Proportion by Age Group							
	a: Under 10	b: 10 to 17	c: 18 to 24	d: 25 to 44	e: 45 to 64	f: 65+	g: NS
Lewisham	0.0 %	32.3 %	38.0 %	23.7 %	4.0 %	0.1 %	1.9 %

	a: Under 10	b: 10 to 17	c: 18 to 24	d: 25 to 44	e: 45 to 64	f: 65+	g: NS
MPS	0.0 %	24.6 %	38.7 %	29.3 %	4.8 %	0.2 %	2.4 %

Gender by 1,000 Head of Population			
	Male	Female	Total
Lewisham	82.6	3.1	41.5

Vehicle Only Searches	
Lewisham	52

Lewisham - Stops and Account* - 2001 Census Population Data

May 2011 to April 2012

Ethnicity by 1,000 Head of Population				
Lewisham	White Stop and Account per 1000 White Pop	Black Stop and Account per 1000 Black Pop	Asian Stop and Account per 1000 Asian Pop	Other Stop and Account per 1000 Other Pop
Self-Defined Ethnicity (SDE)	21.9	32.5	36.5	16.0

Ethnicity Ratio by 1,000 Head of Population		
Stops per 1000 population Ratio Black:White	Stops per 1000 population Ratio Asian:White	% of Stops and Account without record of ethnicity
1.5	1.7	0.1

Lewisham - Arrests following PACE and Other Searches (excl. S60) - Current Month

April 2012

Arrests by Reason Following Search												
	A - Stop & Search for Stolen Property (s1 PACE)		B - Drugs (s23 Misuse of Drugs Act)		C - Firearms (s47 Firearms Act)		DE Offensive Weapons		F - Going Equipped (s1 PACE)		O - Arrested other offences	
Lewisham	11	12.6%	36	41.4%	0	0	10	11.5%	2	2.3%	28	32.2%
MPS	496	16.0 %	928	29.9 %	31	1.0 %	216	7.0 %	93	3.0 %	1338	43.1 %

Arrests Rates by Self Defined Ethnicity (SDE)					
	White	Black	Asian	Other	Not Known
Lewisham	14.7 %	16.9 %	11.1 %	5.7 %	5.7 %
MPS	10.0 %	11.7 %	8.5 %	11.3 %	8.5 %

Arrests Rates by Ethnic Appearance (EA)					
	White	Black	Asian	Other	Not Stated
Lewisham	14.5 %	15.0 %	13.0 %	0.0 %	0.0 %
MPS	10.0 %	11.5 %	8.3 %	10.4 %	5.6 %

Arrest Rates by Gender			
	FEML	MALE	UNKN
Lewisham	0.0 %	15.1 %	
MPS	12.4 %	10.1 %	4.4 %

Arrests By Age Group							
	a: Under 10	b: 10 to 17	c: 18 to 24	d: 25 to 44	e: 45 to 64	f: 65+	g: NS
Lewisham		24	33	19	8		3
MPS		696	1008	1137	202	1	63

Page 44

Lewisham - Arrests following PACE and Other Searches (excl. S60) - Last 12 Months

May 2011 to April 2012

Arrests by Reason Following Search												
	A - Stop & Search for Stolen Property (s1 PACE)		B - Drugs (s23 Misuse of Drugs Act)		C - Firearms (s47 Firearms Act)		DE Offensive Weapons		F - Going Equipped (s1 PACE)		O - Arrested other offences	
Lewisham	112	12.9%	305	35.3%	5	0.6%	81	9.4%	31	3.6%	331	38.3%
MPS	6,464	15.4 %	13,016	31.1 %	350	0.8 %	2,649	6.3 %	1,243	3.0 %	18,118	43.3 %

Arrests Rates by Self Defined Ethnicity (SDE)					
	White	Black	Asian	Other	Not Known
Lewisham	8.5 %	8.9 %	4.7 %	11.3 %	4.4 %
MPS	9.1 %	9.6 %	7.2 %	10.9 %	8.2 %

Arrests Rates by Ethnic Appearance (EA)					
	White	Black	Asian	Other	Not Stated
Lewisham	8.5 %	8.7 %	5.1 %	11.3 %	8.3 %
MPS	9.1 %	9.6 %	7.0 %	11.3 %	8.6 %

Arrest Rates by Gender			
	FEML	MALE	UNKN
Lewisham	9.1 %	8.4 %	11.1 %
MPS	11.9 %	8.9 %	6.1 %

Arrests By Age Group							
	a: Under 10	b: 10 to 17	c: 18 to 24	d: 25 to 44	e: 45 to 64	f: 65+	g: NS
Lewisham	0	220	284	294	51	1	23
MPS	1	8,522	13,758	15,760	2,735	99	989